

PRODUCTGUIDE

# ***BATTERY CHARGERS AND ACCESSORIES***







## ***CONTENTS***

---

***EASY CHARGING*** ***4***

---

***CONSUMER CHARGERS*** ***5***

---

***PROFESSIONAL CHARGERS*** ***17***

---

***INTEGRATED SOLUTIONS*** ***25***

---

***ACCESSORIES*** ***34***

---

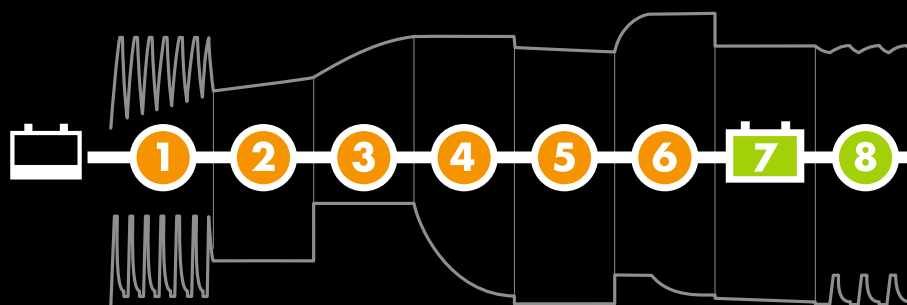
# EASY CHARGING

## STEP BY STEP

*CTEK Chargers maximise the life of your battery through a series of 4 to 8 steps in a unique charging process. The chargers constantly monitor the condition of the battery.*

*When required, they take appropriate action: desulphating, reviving, charging, conditioning and maintaining. CTEK Chargers regulate the charge voltage to protect sensitive and expensive electronics.*

*Some CTEK chargers recondition and help revive deeply discharged batteries. Others even have a backup power supply mode, so you can change your vehicle's batteries without losing any program settings. Once the charger is connected, you can forget about how long the battery needs to be charged or whether it is sulphated. Our chargers take care of all this automatically. We call it "Connect and Forget".*



### 1 STEP 1 **DESULPHATION**

Pulsing voltage removes sulphates from the lead plates in the battery and restores battery capacity.

### 2 STEP 2 **SOFT START**

Tests if the battery can take charge. Charging begins if the battery is OK.

### 3 STEP 3 **BULK**

Charges at maximum current, to approx. 80% of the battery capacity.

### 4 STEP 4 **ABSORPTION**, Ready for use

Charges at declining current until the battery has reached 100% of battery capacity.

### 5 STEP 5 **ANALYZE**

Tests if the battery can hold charge. Batteries that cannot hold charge may need replacement.

### 6 STEP 6 **RECOND**

Reconditioning function for deeply discharged batteries.

### 7 STEP 7 **FLOAT (maintenance)**,

Fully charged

Maintains the battery voltage at maximum level by providing a constant voltage charge.

### 8 STEP 8 **PULSE**, Maintenance charging

Maintains the battery at 95-100 % capacity. The charger monitors the battery voltage and gives a pulse when necessary, to keep the battery fully charged.



# CONSUMER

*Modern cars are full of electronics, and demands on batteries are increasing all the time. One day the battery won't be able to power the electronics, and you might not even get started. With a CTEK charger you don't have to worry, no matter what adventures await you!*





## CS ONE

PART NO. 40-331

Charging any battery just got a whole lot simpler with the CTEK CS ONE. Its revolutionary APTO™ (Adaptive Charging) technology does all the thinking for you – you don't even have to worry about which clamp goes where! This is the easiest charger you'll ever use.

Add in dedicated app control, to unlock additional features and you've got the most advanced charger available today.

Super simple. Super smart. Simply CS ONE.

### FEATURES

- FULLY AUTOMATIC APTO™ (ADAPTIVE CHARGING) TECHNOLOGY, FOR EVERY TYPE OF 12V LEAD ACID OR LITHIUM (12V LiFePO<sub>4</sub>) BATTERY.
- NEW POLARITY FREE CLAMPS THAT CAN BE SAFELY CONNECTED TO EITHER CHARGING POINT.
- EASY TO USE, EASY TO OPERATE – NO BUTTONS TO PRESS OR MODES TO SELECT.
- CLEAR, BRIGHT DISPLAY SHOWS YOU HOW LONG IS LEFT UNTIL THE BATTERY IS CHARGED AND READY TO GO.
- ADDITIONAL FUNCTIONS (RECOND, WAKE UP, SUPPLY & ADVANCED SETTINGS) AVAILABLE VIA THE CTEK APP.

### TECHNICAL DATA

Input	220–240 VAC, 47–63 Hz, 1.2 A
Output	12 V, 8.0 A
Start voltage	1.5 V lead-acid battery types. 1.5 V LiFePO <sub>4</sub>
Back current drain*	Corresponding to less than 1.5 Ah/month
Ripple**	Less than 4 %
Ambient operating temperature	-30 °C to +50 °C
Battery chemistry	Lead acid, Lithium-ion
Battery types	12 V: WET, MF, Ca/Ca, AGM, EFB, GEL, LiFePO <sub>4</sub>
Battery capacity	3–180 Ah
Degree of protection	IP65
Warranty	5 years
Mains cable length (Input)	1.4 m
Temperature compensation	Built in charge voltage compensation according to ambient temperature.
Net weight (unit with cables)	0.675 kg
Dimensions (L x W x H)	235 x 88 x 52 mm

\*) Back current drain is the current that drains the battery if the charger is not connected to the mains. CTEK chargers have a very low back current.

\*\*) The quality of the charging voltage and charging current is very important. A high current ripple heats up the battery which has an aging effect on the positive electrode. High voltage ripple could harm other equipment that is connected to the battery. CTEK battery chargers produce very clean voltage and current with low ripple.



## CS ONE ACCESSORIES



### CS CONNECT ADAPTER CABLE

The CS CONNECT ADAPTER CABLE can be used to attach your CS ONE charger to CTEK CONNECT & INDICATOR accessories, for additional useability, safety, simplicity and functionality.

Part no. 40-376



### CS CONNECT U-TERMINAL

The CS CONNECT U TERMINAL is designed for permanent connection to the battery. Featuring CTEK's unique CONNECT system, it provides a quick & easy connection between the battery and your CS ONE charger - perfect when you have hard-to-reach battery.

**Requires CS CONNECT ADAPTER CABLE.**

Part no. 40-377



### CS ONE BUMPER

The CS ONE BUMPER helps protect your CTEK CS ONE charger from bumps and scratches. Adds extra grip on slippery surfaces. Made of durable silicon rubber material, it's easy to fit — just stretch the CS ONE BUMPER over the charger body for a snug fit.

Part no. 40-476







## CS FREE

PART NO. 40-462

CTEK CS FREE is the world's first truly portable battery charger and maintainer with Adaptive Boost technology. You can charge and maintain any 12V lead acid or lithium vehicle battery anywhere without being connected to a power outlet. And if your battery's flat, CS FREE's revolutionary Adaptive Boost technology will get you going within 15 minutes.

### FEATURES

- WORKS WITH ALL TYPES OF 12V LEAD ACID AND LITHIUM BATTERIES.
- SUITABLE FOR USE ON MOTORBIKES, CARS, LEISURE VEHICLES AND VANS.
- CAN BE LEFT SAFELY CONNECTED FOR MAINTENANCE CHARGING.
- CAN BE CHARGED AND USED WITH 12V ACCESSORY SOCKET, 12V SERVICE BATTERY OR SOLAR PANEL.
- EASY TO USE, EASY TO OPERATE, EASY TO UNDERSTAND.
- EASY TO CARRY AROUND OR WALL MOUNT USING THE OPTIONAL CS WALL MOUNT.
- COMPATIBLE WITH NEW CTEK CS FREE ACCESSORIES.
- PROTECTS YOUR BATTERY, SAFE AND EASY TO USE AND FULLY AUTOMATIC.



### TECHNICAL DATA

Input	USB-C, 5 VDC - 25 VDC, 3 ADC/60 W max
Output	12 V, 20 A/240 W max
Start voltage	3.0 V
Ambient operating temperature	-20 °C to +50 °C (-4 °F to +122 °F)
Ambient storage temperature	-20 °C to +45 °C (-4 °F to +113 °F)
Battery chemistry	Lead acid, Lithium
Battery types	12 V: WET, MF, Ca/Ca, AGM, EFB, GEL, LiFePO <sub>4</sub>
Battery capacity	10-130 Ah
Degree of protection	IP54
Warranty	2 years
Net weight (unit with cables)	1.4 kg
Dimensions (L x W x H)	248 x 98 x 78 mm
USB-A Output	5 VDC, 2.4 ADC/12 W max
USB-C Output	5 VDC, 9 VDC, 12 VDC, 15 VDC, 20 VDC, 3 ADC/60 W max

### MAINS ADAPTER

Input	100 VAC - 240 VAC, 50 Hz - 60 Hz, 60 W max
Output	USB-C, 5 VDC - 20 VDC, 3 ADC, 60 W max
Cable Length	1 m
Cable type	USB-C

### INTERNAL BATTERY

Capacity	66 Wh
Cell chemistry	Polymer Lithium-Ion
Cell type	Pouch Cell
Discharge temperature	-20 °C to +50 °C (-4 °F to +122 °F)
charge temperature	0°C to +45°C (32°F to 113°F)
Shelf life	1 year
Life span	300 cycles, 80%





## USB-C CHARGE CABLE CLAMPS

The USB-C CHARGE CABLE CLAMPS have been designed in Sweden to power your CS FREE quickly, safely and easily from a 12V service battery. The clamps let you charge and maintain your vehicle battery wherever you are and without having to connect to a power outlet.

Part no. 40-465



## USB-C CHARGE CABLE 12V PLUG

The USB-C CHARGE CABLE 12V PLUG makes it safe and easy to charge your CS FREE's internal battery while you're on the move, or when your vehicle is parked.

Simply plug it into your vehicle's 12V cigarette lighter or accessory socket\* and connect the USB-C plug to the CS FREE's charge input port.

*\* Please note that the socket must be powered even when the ignition is in the 'OFF' position.*

Part no. 40-464



## CS WALL MOUNT

The CS WALL MOUNT features CTEK's unique mounting system to hold your CS charger securely. Designed and tested in Sweden, this hard wearing accessory can be permanently wall mounted or temporarily hung on a hook.

The CS WALL MOUNT gives you easy access to all your CS charger's functions and has a practical clamp mount to keep your charger cables stored neatly.

Part no. 40-375



## STORAGE CASE

The STORAGE CASE is tough, durable and lightweight to protect your CS FREE and keep it safe from the elements - wherever you take it. Designed and tested in Sweden, the STORAGE CASE is made from heavy duty 600D water repellent nylon with a protective padded interior and a practical carrying handle.

Part no. 40-517



## SOLAR PANEL CHARGE KIT

The SOLAR PANEL CHARGE KIT pairs perfectly with the CS FREE. It delivers fast, reliable solar power so you can recharge or even independently power your CS FREE wherever you take it.

Made from super tough fibreglass, you simply unfold it and connect it to your CS FREE in seconds, giving you the ultimate freedom from mains power. Charge and maintain your vehicle battery or charge up portable tech like smart phones, pads and laptops, even when you're nowhere near a power outlet.

Part no. 40-463

- Ultimate freedom from mains power outlets.
- Recharges your CS FREE
- in just one hour.
- Tough, waterproof and weather resistant.
- Lightweight and portable.
- Carry case with adjustable kickstand for flexible 180° positioning.
- Ideal for the great outdoors.

The CT5 START/STOP battery charger is specially designed to provide safe and easy charging and maintenance for vehicles equipped with new generation Start/Stop technology. There are no buttons that need pressing or settings to choose. This easy to use smart charger is the perfect solution for keeping your AGM or EFB battery in peak health to maximize vehicle performance, extend battery life and help reduce your CO<sub>2</sub> emissions.

- Fully optimised for start/stop battery types i.e. AGM and EFB batteries.
- Simple to use with an easy to understand display.
- Fully automatic charging.
- Non-sparking, reverse-polarity protected.

### TECHNICAL DATA

Voltage	14.55 V
Charging current	3.8 A
Charger type	Multi Step fully automatic charging cycle
Battery type	12V: AGM, EFB
Battery capacity	14-110 Ah, maintenance charging up to 130 Ah
Degree of protection	IP65 (splash and dust proof)
Warranty	5 year warranty



CT5 TIME TO GO puts you in the picture by giving an answer to the questions “when can I try and start my vehicle after a flat battery” and “how long before my battery is charged?” CTEK can now give all car-owning consumers exactly what they want – the ability to plan their day.

- For all types of lead-acid 12V batteries (WET, MF, Ca/Ca, AGM, GEL).
- Shows you exactly how long in hours until the battery is fully charged.
- Indicator to tell you when you can try and start the vehicle after a flat battery.
- Fully automatic charging with max 5A.
- Tests and restores battery capacity.
- Non-sparking, reverse polarity protected.

### TECHNICAL DATA

Voltage	NORMAL 14.4V, AGM 14.7V, RECOND 15.8V
Charging current	Max 5A
Charger type	Multi Step fully automatic charging cycle
Battery type	12V: WET, MF, Ca/Ca, GEL
Battery capacity	20-160Ah
Degree of protection	IP65 (splash and dust proof)
Warranty	5 year warranty





Make sure you're ready for action every time with the easy to use CT5 POWERSPORT battery charger. With dedicated programs for lead-acid and lithium-Ion (LiFePO<sub>4</sub>) batteries, you can get the best performance out of your powersport vehicle batteries whether you're on land, water, snow or ice.

- Charges lead-acid and lithium batteries.
- 2.3A of power, just right for charging powersport vehicle batteries.
- Maintenance charging for seasonal powersport vehicles stored for long periods of time.
- Non-sparking, reverse-polarity protected.



## TECHNICAL DATA

Voltage	NORMAL 14.4V, RECOND 15.8V, LITHIUM 14.2V
Charging current	Max 2.3A
Charger type	Multi Step fully automatic charging cycle
Battery type	12V: WET, MF, Ca./Ca, AGM, GEL, LiFePO <sub>4</sub>
Battery capacity	5-25 Ah
Degree of protection	IP65 (splash and dust proof)
Warranty	5 year warranty



## XS 0.8

PART NO. 56-707

The XS 0.8 offers state of the art technology and is perfect for charging smaller 12 V batteries that can be found in motorcycles, jet skis, ATVs and lawnmowers. It is also suitable for maintenance charging 'normal size' batteries such as car batteries. The unique display allows the user to follow the entire charging process. The XS 0.8 is designed to protect vehicle electronics. It is non-sparking, reverse polarity protected and short-circuit proof.

- Charges batteries up to 32 Ah. Maintains larger batteries up to 100 Ah.
- Fully automatic, 6 step charging includes patented desulphation and pulse maintenance programs.
- Compact tough design – splash resistant and dustproof to IP65.

### TECHNICAL DATA

Voltage	14.4 V
Charging current	Max 0.8 A
Charger type	6 step, fully automatic charging cycle
Battery type	12 V lead-acid batteries
Battery capacity	1.2–32 Ah, maintenance charging up to 100 Ah
Degree of protection	IP65 (splash and dust proof)
Warranty	5 year warranty



## MXS 3.8

PART NO. 56-309

The MXS 3.8 is a microprocessor controlled battery charger with patented Float/Pulse maintenance. The MXS 3.8 solves a broad range of battery problems and is the ideal charger for everyday use. The MXS 3.8 tests the battery condition before charging to establish if it can receive and retain charge. The MXS 3.8 features a patented automatic desulphation phase during the charging process. A special 'Snowflake' mode for optimum charging on cold winter days. The patented Float/Pulse maintenance means the MXS 3.8 is ideal for long-term maintenance. The entire charging process is easily followed on the clear LED display.

- Charges batteries up to 85 Ah. Maintains larger batteries up to 130 Ah.
- Unique 7 step charging.
- Cold weather mode.
- Connect and Forget.
- Extends battery life.

### TECHNICAL DATA

Voltage	14.4/14.7 V
Charging current	Max 3.8 A
Charger type	7 step, fully automatic charging cycle
Battery type	All 12 V Lead Acid types
Battery capacity	1.2–85 Ah, maintenance charging up to 130 Ah
Degree of protection	IP65 (splash and dust proof)
Warranty	5 year warranty





## MXS 5.0



PART NO. 56-305

The MXS 5.0 is a microprocessor controlled battery charger with automatic temperature sensor built-in. The MXS 5.0 solves a broad range of battery problems and is the ideal charger for the user with high demands. The MXS 5.0 tests whether the battery can retain a charge. The MXS 5.0 offers a patented automatic desulphation phase and a specific program for reconditioning, reviving and restoring deeply discharged and stratified batteries. AGM mode is perfect for maximising performance and life of most Start/Stop batteries.

- Charges batteries up to 110 Ah. Maintains larger batteries up to 160 Ah.
- Unique 8 step charging.
- Temperature sensor.
- AGM program.
- 8 charging programs/program alternatives.

### TECHNICAL DATA

Voltage	14.4/14.7/15.8 V
Charging current	Max 5 A
Charger type	8 step, fully automatic charging cycle.
Battery type	12 V lead-acid batteries
Battery capacity	1.2-110 Ah, maintenance charging up to 160 Ah
Degree of protection	IP65 (splash and dust proof)
Warranty	5 year warranty



## MXS 5.0 TEST&CHARGE



PART NO. 56-976

The MXS 5.0 TEST&CHARGE combines an advanced microprocessor controlled battery charger with a battery and alternator test function to provide the ultimate in battery testing, charging and maintenance.

**TESTING** – Three easy to use programs to test battery voltage, start power and alternator performance to provide a complete picture of battery and vehicle charging system health.

**CHARGING** – MXS 5.0 TEST&CHARGE provides excellent charging performance. The charger solves a broad range of battery problems and features include a patented automatic desulphation program and a special reconditioning function that revives and restores deeply discharged and stratified batteries. The patented Float/Pulse maintenance makes the charger ideal for long-term maintenance.

### TECHNICAL DATA

Voltage	14.4/14.7/15.8 V
Charging current	5 A
Charger type	8 step, fully automatic charging cycle 3 voltage test programs
Battery type	12 V lead-acid batteries
Battery capacity	1.2-110 Ah, maintenance charging up to 160 Ah
Degree of protection	IP65 (splash and dust proof)
Warranty	5 year warranty



## MXS 7.0



PART NO. 56-758

The MXS 7.0 is the perfect universal 12 V charger. It is ideal for charging larger batteries found in caravans, RV's, boats and cars. The MXS 7.0 offers features such as battery diagnosis, a special reconditioning function and unique maintenance charging. The charger even has a mode for optimised charging during cold winter days and the charging of AGM batteries. The MXS 7.0 also has a Supply mode which allows the battery to be disconnected from the vehicle without losing important configurations.

- Charges batteries from 14 Ah up to 150 Ah. Maintains larger batteries up to 225 Ah.
- Supply program – can be used as a 12 V power source to protect electrical settings.
- Cold weather program, for charging in cold conditions and for AGM batteries.
- Recond program – special program to revive deeply discharged batteries.
- Splash resistant and dust-proof to IP65.

### TECHNICAL DATA

Voltage	14.4/14.7/15.8/13.6 V
Charging current	Max 7 A
Charger type	8 step, fully automatic charging cycle
Battery type	12 V lead-acid batteries
Battery capacity	14–150 Ah, maintenance charging up to 225 Ah
Degree of protection	IP65 (splash and dust proof)
Warranty	5 year warranty



## MXS 10



PART NO. 56-818

The MXS 10 contains the very latest technology. It is ideal for professional use and excellent in workshops, caravans, RVs, boats or cars. The MXS 10 offers features such as battery diagnosis, a special reconditioning function, unique maintenance charging and a temperature sensor for optimised charging. The special AGM mode is ideal for AGM battery chemistry and where Start/Stop batteries are to be charged or maintained. The charger also has a Supply mode which allows the battery to be disconnected from the vehicle without losing important configurations.

- Charges batteries from 20 Ah up to 200 Ah. Maintains larger batteries up to 300 Ah.
- Recond program – special program to revive deeply discharged batteries.
- Supply program – can be used as a 12 V power source to protect electrical settings.
- Special AGM mode – ideal for Start/Stop batteries.
- Removable temperature sensor.

### TECHNICAL DATA

Voltage	14.4/14.7/15.8/13.6 V
Charging current	Max 10 A
Charger type	8 step, fully automatic charging cycle
Battery type	12 V lead-acid batteries
Battery capacity	20–200 Ah, maintenance charging up to 300 Ah
Degree of protection	IP65 (splash and dust proof)
Warranty	2 year warranty







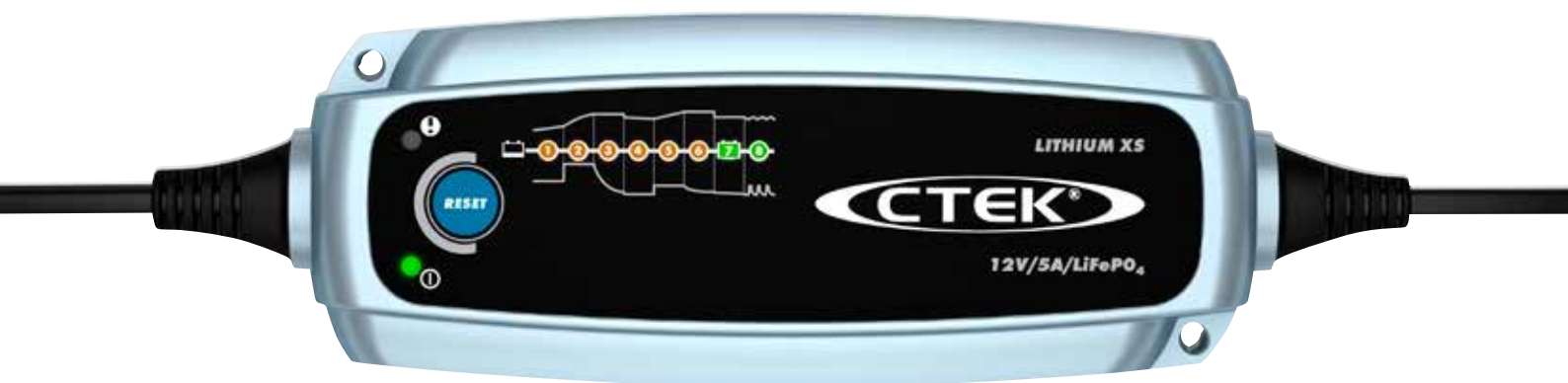


The LITHIUM XS is an advanced microprocessor controlled charger specially designed to charge and maintain the cells of Lithium-Ion Phosphate (LiFePO<sub>4</sub>) batteries – maximising their performance and lifespan. With up to 5 A of charge current available the LITHIUM XS is extremely flexible and will charge LiFePO<sub>4</sub> batteries from 5 Ah to 60 Ah. Operation is simple and charging will commence upon connection. No need to disconnect the battery from the vehicle. At charge start the LITHIUM XS will automatically reset any low voltage protection electronics (Battery Management System) fitted. Charging can be restarted manually at any time using the 'Reset' button.

- Safe and easy to use.
- Designed for LiFePO<sub>4</sub> batteries.
- Automatic low voltage reset.
- Checks battery condition at each stage.
- Ensures maximum battery capacity.

## TECHNICAL DATA

Voltage	13.8/14.4 V
Charging current	Max 5 A
Charger type	8 step, fully automatic charging cycle
Battery type	12 V Lithium Ion Phosphate (LiFePO <sub>4</sub> )
Battery capacity	5–60 Ah, maintenance charging up to 120 Ah
Degree of protection	IP65 (splash and dust proof)
Warranty	5 year warranty



### STEP 1 ACCEPT

Tests if the battery can accept charge. This step prevents charging from proceeding on a defective battery.

### STEP 2 BULK

Charging with maximum current until approximately 90% battery capacity.

### STEP 3 ABSORPTION

Charging with declining current to maximize up to 95% battery capacity.

### STEP 4 ANALYZE

Tests whether the battery can retain a charge. Batteries that cannot retain a charge may require replacement.

### STEP 5 COMPLETION

Final charge with reduced current up to approximately 98% battery capacity.

### STEP 6 MAXIMIZATION

Final charge with maximum voltage up to 100% battery capacity.

### STEP 7 FLOAT

Keeps battery voltage at maximum level by charging at a constant voltage.

### STEP 8 PULSE

Maintaining the battery at 95–100% capacity. The charger monitors the battery voltage and gives a pulse when necessary to keep the battery fully charged.



# PRO

*Battery support during service, diagnostics and flashing requires a safe and stable power supply. The various battery types found in today's vehicles all require safe and effective charging - and sometimes recovery and reconditioning. CTEK Pro Series chargers offer safe, simple to use and effective solutions for all workshop battery support and charging needs.*

## MXS 10CIC



PART NO. 40-216

The MXS 10CIC is a battery management system that will help to monitor and maintain vehicle batteries in the showroom. It consists of two highly effective and simple to use pieces of equipment:

- A simple 'traffic light' Comfort Indicator allows dealership staff to easily monitor battery status and identify if the battery needs a charge.
- A CTEK MXS 10 battery charger delivers a 10A charge safely, and without the need to remove the battery from the vehicle.

### TECHNICAL DATA

Voltage	14.4/14.7/15.8/13.6 V
Charging current	Max 10 A
Charger type	8 step, fully automatic charging cycle
Battery type	12 V lead-acid batteries
Battery capacity	20-200 Ah, maintenance charging up to 300 Ah
Degree of protection	IP65 (splash and dust proof)
Warranty	2 year warranty



## MXS 10EC



PART NO. 40-096

The CTEK MXS 10EC is a fully automatic 12 V 10 A 8 step smart charger and battery support unit. Designed for workshop use, the MXS 10EC includes a wide range of features, including an automatic diagnostic function that tests whether a battery is able to take and hold a charge and a supply function that allows it to be used as a power supply to support vehicle electronics during sensitive battery changeovers. Temperature compensated for efficiency. The versatile MXS 10EC features 4 metre extended cables and a protective silicon rubber bumper.

- Designed for workshop use.
- Versatile battery diagnostic, charging, reconditioning and support functions.
- Equipped with long 4 metre cables for convenience.
- Highly portable with durable non-slip protective bumper guard.

### TECHNICAL DATA

Voltage	14.4/14.7/15.8/13.6 V
Charging current	Max 10 A
Charger type	8 step, fully automatic charging cycle
Battery type	12 V lead-acid batteries
Battery capacity	20-200 Ah, maintenance charging up to 300 Ah
Degree of protection	IP65 (splash and dust proof)
Warranty	2 year warranty





The PRO25S is an innovative, versatile and highly efficient 25 A battery charger and power supply, designed around the needs of the automotive professional. Combining power & advanced technology with safety, portability and flexibility to work with any 12 V vehicle battery including Lithium-Ion (LiFePO<sub>4</sub>), the PRO25S is the perfect solution to professional battery charging, in the workshop or the showroom.

- Charges and maintains batteries from 40 Ah up to 500 Ah (30–450 Ah for lithium).
- Recond program.
- Power supply for 12 V equipment.
- Automatic temperature compensation for high efficiency.
- IP44 classified for outdoor use.

## TECHNICAL DATA

Voltage	LEAD-ACID: 14.4/15.8/13.6 V, LITHIUM: 13.8/14.4/13.3 V
Charging current	Max 25 A
Charger type	8 step, fully automatic charging cycle
Battery type	12 V lead-acid batteries 12 V lithium (LiFePO <sub>4</sub> ) batteries
Battery capacity	LEAD-ACID: 40–500 Ah, LITHIUM: 30–450 Ah
Degree of protection	IP44 (outdoor use)
Warranty	2 year warranty



The PRO25SE is an innovative, versatile and highly efficient 25A battery charger and power supply. Supplied with 6 Metre charging cables, you can install the unit on ramp-posts or in work bays. Combining power & advanced technology with safety and compatibility to work with any 12V vehicle battery, including Lithium-Ion (LiFePO<sub>4</sub>), it's the perfect solution for battery charging in the professional workshop.

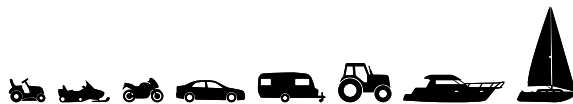
- Safe and easy to use.
- Tests and reconditions deeply discharged batteries.
- Battery support function.
- Supplied with 6 metre cables, wall hanger and bracket.

## TECHNICAL DATA

Voltage	LEAD-ACID: 14.4/15.8/13.6 V, LITHIUM: 13.8/14.4/13.3 V
Charging current	Max 25 A
Charger type	8 step, fully automatic charging cycle
Battery type	12 V lead-acid batteries 12 V lithium (LiFePO <sub>4</sub> ) batteries
Battery capacity	LEAD-ACID: 40–500 Ah, LITHIUM: 30–450 Ah
Degree of protection	IP44 (outdoor use)
Warranty	2 year warranty







The Battery Analyzer accurately tests the condition of 12V lead-acid starter batteries including Wet, Maintenance Free, Ca/Ca and Gel. Easy to use it provides fast and easy to understand results. The easy to read display gives clear information on the condition of the 12 V lead-acid battery and advises what action is required. With no need to disconnect the battery from the vehicle, the patented technology used by the Battery Analyzer is safe for the user and vehicle electronics. It is reverse polarity protected, creates no battery loads, heat or sparks.

- Simply connect to battery (no need to disconnect) and follow the on-screen instructions.
- Tests the battery in seconds providing an instant on-screen result which advises what action should be taken.
- Patented technology provides fast, accurate results test without placing load on the battery.
- Suitable for most 12 V lead-acid starter batteries between 200 and 1200 EN.

## TECHNICAL DATA

Type of analyzer	Conductance
Type of battery analyzed	12 V lead-acid starter batteries (WET, MF, Ca/Ca, GEL)
Testing voltage	Min. 8 V, Max. 15 V
Resolution (V)	0.1 V
Accuracy (V)	± 0.1 V
Range (EN)	200-1200 EN
Accuracy (EN)	± 25 EN
Warranty	2 year warranty



# PRO BATTERY TESTER

The CTEK PRO Battery Tester gives you quick, simple and accurate battery tests in seconds. It has an integrated printer so you can hand your customer a printout of the results and talk to them immediately about preventative maintenance for their battery or electrical system.

- Multiple rating system compatible (CCA, DIN, EN, IEC, SAE)
- Tests multiple battery chemistries: standard/flooded, AGM and GEL
- Tests 12V batteries and electrical systems for cars and light trucks
- Tests starting and charging system voltage
- Integrated printer

## TECHNICAL DATA

Display	LCD text display
Temperature compensated	Tester prompted
Operating temperature	0-50° C (32-120° F)
Test range	100-900 CCA 100-550 DIN 100-900 EN 100-550 IEC 100-900 SAE
Built-in printer	Powered by battery under test
Voltage range	Tests 12V batteries down to 1V
Cable length	533.4 mm
Power requirements	Uses power of battery under test or 9V battery
Voltmeter	0.9-16 Vdc, +/- 0.05 Vdc
Housing material	Acid resistant ABS plastic
Dimensions	230 x 102 x 65 (mm)
Weight	499 g







The MXTS 40 is essential equipment that is suitable for universal use in the 12 V and 24 V vehicle workshop or showroom. It is a simple to use, electronically safe battery charger with rapid charging capabilities for all chemistries. Equally suited to battery support, the MXTS 40 provides selectable constant voltage settings to avoid ECU damage. Highly portable the MXTS 40 comes with 2.5 metre heavy duty cables and high quality detachable clamps.

- Ideal for workshop and showroom use.
- 40A/12 V and 20A/24 V output.
- Selectable constant voltage power supply for ECU's.
- Temperature compensation and battery reconditioning.
- Heavy duty 2.5 M detachable charge cables and clamps.
- Compatible with Pro Accessories.



## TECHNICAL DATA

Voltage	14.4V/14.7 V/15.8 V and 28.8 V/29.4 V/31.6 V
Charging current	Max 40/20 A
Charger type	8 step, fully automatic charging cycle with adjustable parameters
Power supply settings	12V: 13.6V/14.0V/14.4V/14.8V 24V: 27.2V/ 28.0V/28.8V/ 29.6V
Battery type	All types of 12 V/24 V lead-acid batteries
Battery capacity	12V: 20-1200Ah, 24V: 10-600Ah
Degree of protection	IP20
Warranty	2 year warranty



The PRO60 is a new generation advanced charger and battery support unit designed specifically for the needs of the modern 12V vehicle workshop. Highly portable, easy to use and suitable for all Lead -Acid technologies including AGM and EFB Start/Stop types, the PRO60 also features an advanced Lithium charging mode. The Patent Applied For 'Adaptive Charging' function constantly analyses the battery to ensure maximum battery charge is achieved in the shortest possible time and allows the user to easily charge any Lead - Acid battery size from as little as 10Ah capacity. Selectable voltage battery support for workshop or showroom is available - up to 60A constant current.

- All battery types including Lithium.
- Adaptive charging and wide battery range: 10Ah - 1600Ah.
- Selectable 12.6V-14.8V constant voltage output up to 60 Amps.
- 5M DC cables and high specification clamps.
- High efficiency with fan-less cooling.

**TECHNICAL DATA**

Voltage	14.4V/14.7V/15.8V
Charging current	Max 60 A
Charger type	8 step, fully automatic charging cycle with adjustable parameters and adaptive charging
Battery type	All types of 12V Lead-Acid and Lithium LiFePO <sub>4</sub>
Battery capacity	Lead-Acid: 10-1800Ah, LiFePO <sub>4</sub> : 15-600Ah
Degree of protection	IP40 (indoor use)
Warranty	2 year warranty







## PRO120

PART NO. 40-230

The PRO120 restores charge and reconditions batteries using a patented multi step charging process. It's compatible with all types of 12V battery, including normal wet/flooded, Ca/Ca and Lithium (LiFePO<sub>4</sub>), as well as AGM and EFB Stop/Start batteries.

The PRO120's 'Auto-Adaptive charging' mode automatically detects the appropriate settings for the battery and applies the optimum settings for the fastest charge. It's designed to be user friendly with just four buttons and a clear, easy to read LCD display. The PRO120 is the perfect stable power supply, with 12.6-14.8V available in selectable 0.1V increments. This ensures that no damage can occur to sensitive vehicle electronics.

### FEATURES

- UP TO TO 120 AMPS OF STABLE POWER WITH FULLY ADJUSTABLE VOLTAGE SETTINGS.
- COMPATIBLE WITH ALL TYPES OF 12V BATTERY, INCLUDING LITHIUM (LiFePO<sub>4</sub>).
- SUITABLE FOR BATTERIES FROM 10AH-3600AH (15AH-1200AH LiFePO<sub>4</sub>).
- 5M CABLES AND HEAVY DUTY CLAMPS.
- HIGH EFFICIENCY WITH FAN-LESS COOLING.

### TECHNICAL DATA

Voltage	14.4V/14.7V/15.8V
Charging current	Max 120 A
Charger type	8 step, fully automatic charging cycle with adjustable parameters and adaptive charging
Battery type	All types of 12V Lead-Acid and Lithium LiFePO <sub>4</sub>
Battery capacity	Lead-Acid: 10-3600Ah, LiFePO <sub>4</sub> : 15-1200Ah
Degree of protection	IP40 (indoor use)
Warranty	2 year warranty

## MXT 4.0



PART NO. 56-778

The MXT 4.0 is ideal for maintenance charging of larger fleets with 24 V vehicles, backup systems, industrial cleaning machinery and wheelchairs, etc. The MXT 4.0 is equipped with all necessary features and functions to solve a broad range of battery related problems.

- 4 A output charges batteries from 8 Ah up to 100 Ah and maintains larger batteries up to 250 Ah.
- Fully automatic 8 step charging includes patented desulphation and pulse maintenance programs.
- Recond program – special program to revive deeply discharged batteries.
- Cold weather program, for charging in cold conditions and for AGM batteries.
- Compact tough design – splash resistant and dustproof to IP65.

### TECHNICAL DATA

Voltage	28.8/29.4/31.6 V
Charging current	Max 4 A
Charger type	8 step, fully automatic charging cycle
Battery type	24 V lead-acid batteries
Battery capacity	8-100 Ah, maintenance charging up to 250 Ah
Degree of protection	IP65 (splash and dust proof)
Warranty	2 year warranty



## MXT 14



PART NO. 56-768

The MXT 14 is a professional 24 V charger. It is developed for commercial vehicles where the batteries are put under considerable strain and is ideal for buses, trucks and CV workshops. The MXT 14 is equipped with all necessary features and functions to solve a broad range of battery related problems.

- Charges batteries from 28 Ah up to 300 Ah and maintains larger batteries up to 500 Ah.
- Supply program – can be used as a 24 V power source to protect electrical settings.
- Recond program – special program to revive deeply discharged batteries.
- Built-in temperature sensor.
- High efficiency.

### TECHNICAL DATA

Voltage	28.8/31.6/27.2 V
Charging current	Max 14 A
Charger type	8 step, fully automatic charging cycle
Battery type	24 V lead-acid batteries
Battery capacity	28-300 Ah, maintenance charging up to 500 Ah
Degree of protection	IP44 (outdoor use)
Warranty	2 year warranty





# INTEGRATED SOLUTIONS

*Effective battery management has become more important than ever before, as has the demand for integrated charging solutions that meet ever-increasing power requirements, save space and significantly extend battery life.*

*Whether it's a fixed installation or a more portable 'plug and go' option, there is a CTEK battery charging solution for you. Our range of 12V & 24V chargers will deliver a complete battery care solution and maximize battery performance.*



The XS 7000 is the perfect universal 12 V charger. XS 7000 has no mode button, just plug in the mains and connect the battery cables to start charging. It is ideal for charging larger batteries and has been developed for either portable operation or permanent mounting. The XS 7000 offers features such as battery diagnosis that shows if a battery can receive and retain a charge, along with unique maintenance charging.

- Charges batteries from 14 Ah up to 150 Ah. Maintains larger batteries up to 225 Ah.
- No sparks, short-circuit proof and reverse-polarity protected for trouble-free usage.
- Automatic detection of end-of-life batteries that eliminates unwanted surprises.
- Splash resistant and dust-proof to IP65.



## TECHNICAL DATA

Voltage	14.4 V
Charging current	Max 7 A
Charger type	7 step, fully automatic charging cycle
Battery type	12 V lead-acid batteries
Battery capacity	14-150 Ah, maintenance charging up to 225 Ah
Degree of protection	IP65 (splash and dust proof)
Warranty	2 year warranty



The I1225 offers efficient and fast charging and is ideal charging and maintenance charging of 12V vehicles and machinery. The I1225 fully automatic 7 step charger delivers 25A to 12V batteries from 40-500Ah and is IP44 classified for outdoor use. It features automatic battery diagnosis to establish whether your battery can receive and retain a charge, unique maintenance charging and a temperature sensor for optimised charging regardless of weather conditions. The I1225 comes with 2 m cable with M10 eyelets for easy installation.

- Charges batteries from 40-500 Ah.
- Patented maintenance charge for longer life batteries.
- Temperature sensor to compensate for cold conditions.
- Reverse polarity protected.
- Short circuit proof.



## TECHNICAL DATA

Voltage	14.4 V
Charging current	Max 25 A
Charger type	7 step, fully automatic charging cycle
Battery type	12 V lead-acid batteries
Battery capacity	40-500 Ah
Degree of protection	IP44 (outdoor use)
Warranty	2 year warranty









## D250SE

PART NO. 40-315

The D250SE is a fully automatic, 5 step charger that supplies up to 20A of power to any 12V lead-acid or lithium service battery from 40-300Ah. It has selectable charge algorithms for AGM and lithium batteries and can use power through its dual input from alternator, solar panel and wind power. When the service battery is fully charged, the D250SE will automatically redirect maintenance charge power to the starter battery. The D250SE can maintain a stable output up to 20A to vehicles fitted with smart ECU controlled alternators and also has a temperature sensor for optimised charging, regardless of weather conditions.

### FEATURES

- 20A FULLY AUTOMATIC TEMPERATURE COMPENSATED CHARGING FOR BATTERIES FROM 40-300AH WHILE YOU'RE ON THE MOVE
- DUAL INPUT (SOLAR AND ALTERNATOR IN PARALLEL)
- SMART ALTERNATOR COMPATIBLE
- BATTERY SEPARATION REPLACING DIODES AND VSR RELAYS
- SOLAR PANEL REGULATOR WITH MAXIMUM POWER POINT TRACKING (MPPT)
- SELECTABLE LITHIUM AND LEAD-ACID MODE

### TECHNICAL DATA

Input	11.5-23V, 25A
Output	14.4/14.7/14.2V, 20A
Battery types	12V: WET, MF, Ca/Ca, AGM, EFB, GEL, LiFePO <sub>4</sub>
Battery capacity	40-300Ah
Degree of protection	IP65 (splash and dust proof)
Warranty	2 year



## SMARTPASS 120S

PART NO. 40-289

Smartpass 120S is a 120A Power Management Solution which distributes, controls and maximises the available energy from your alternator to power service batteries and consumers. Smartpass 120S handles all 12V batteries between 28-800Ah. The Smartpass 120Ss Battery Guard function ensures that critical equipment such as radio, emergency lights and navigation systems always have power and take priority when the voltage on the service battery is low disconnecting non-critical consumers. The unit's Battery Guard will protect your service battery from total discharge and built in over temperature protection reduces charge current before the battery temperature gets too high. Smartpass 120S is compatible with the D250SA and D250SE 20A on board chargers.

### FEATURES

- BATTERY SEPARATION ELIMINATES DIODES AND VSR RELAYS
- DELIVERS 120A FOR QUICK RECHARGE OF BATTERIES 28-500AH
- COMPATIBLE WITH D250SA AND D250SE FOR THE ULTIMATE 140A POWER MANAGEMENT SOLUTION.
- PRIORITIZING CRITICAL CONSUMERS AND SUPPLIES CONSUMERS DIRECTLY FROM THE ALTERNATOR

### TECHNICAL DATA

Input	11.5-23V, Max 120A (350A temporarily for 10 seconds)
Output	Max. 14.4V, 120A (350A temporarily for 10 seconds)
Battery types	12V: WET, MF, Ca/Ca, AGM, EFB, GEL, LiFePO <sub>4</sub>
Battery capacity	28-800Ah
Degree of protection	IP65 (splash and dust proof)
Warranty	2 year





## D250T

PART NO. 40-373

D250T is a 24V DC-DC battery charger for dual battery systems with starter battery and service battery.

D250T is designed to be used as onboard charger for charging and maintaining the service battery from alternator when motor is running, this will give you enough of power in the service battery when arriving to the destination.

D250T is a fully automatic, 4 step DC-DC charger that supplies up to 10A of power to charge any 24V lead-acid service battery. The charger is also a battery isolator that separate the service battery and starter battery to protect the starter battery from being drained when motor is not running.

With the D250T you can be confident that the service battery always will receive the optimal charging voltage, with reduced charge time and ensuring the charging will be 100% complete. You will get a stable and efficient charging of the battery that is not dependent in alternator capacity or resistance in cables.

D250T will reduce environmental impact and lower the maintenance costs through extended battery life and a reduced need of service.

### TECHNICAL DATA

Input	25.6-32V, 10-15A
Output	28.8V, 10A
Battery types	24V: WET, MF, Ca/Ca, AGM, EFB, GEL
Battery capacity	28-150Ah
Degree of protection	IP65 (splash and dust proof)
Warranty	2 year



## SMARTPASS 120T

PART NO. 40-329

SMARTPASS 120T is a 24V multifunctional power management solution and split charging system for vehicles with a dual battery setup (Starter battery and Service battery). SMARTPASS 120T distributes, controls, and maximizes the available energy from your alternator to service battery and electrical consumers.

SMARTPASS 120T is to be used in applications where the alternator gives is able to deliver the desired charging voltage and the service battery has many parallel consumers with average load greater than 10A.

The battery guard function in SMARTPASS 120T will turn off equipment connected to consumer output when service battery voltage is too low, this protects the service battery from deep discharge and will increase lifetime of battery. To maximize the split charging process Smartpass will supply power to the connected consumers directly from alternator when motor is running.

SMARTPASS 120T ensures a safe operation by safety features as Battery temperature protection, Dynamic overcurrent protection and Over temperature protection.

### TECHNICAL DATA

Input	22.8-32VDC
Output	Max 120A * (consumer output max 100A)
Battery types	24V: WET, MF, Ca/Ca, AGM, EFB, GEL
Battery capacity	28-800Ah
Degree of protection	IP65 (splash and dust proof)
Warranty	2 year

\*) Total max output current for Smartpass is 120A and available current from alternator will be distributed into the two different output channels, Output Battery and Output Consumer. Specified value is the total current transferred to the two outputs.

## XT 14000



PART NO. 40-139

The XT 14000 is a professional 24V charger. It has been developed for charging and maintenance charging of 24V vehicles and machinery. The XT 14000 is equipped with all necessary features and functions to solve a broad range of battery related problems. It offers features such as battery diagnosis that shows if a battery can receive and retain a charge, unique maintenance charging, and a temperature sensor for optimised charging regardless of the weather conditions.

- No mode button - just plug in the mains and connect the battery cables to start charging.
- Compact tough design - IP44 rated, suitable for outdoor use.
- Temperature sensor.
- Automatic detection of end-of-life batteries that eliminates unwanted surprises.

### TECHNICAL DATA

Voltage	28.8 V
Charging current	Max 14 A
Charger type	7 step, fully automatic charging cycle
Battery type	24 V lead-acid batteries
Battery capacity	28-300 Ah, maintenance charging up to 500 Ah
Degree of protection	IP44 (outdoor use)
Warranty	2 year warranty



## XT 14000 EXTENDED



PART NO. 40-140

The XT14000 EXTENDED is a professional 24 V charger. It is developed for charging and maintenance charging of 24 V vehicles and machinery. XT14000 EXTENDED has no mode button, just plug in mains and connect battery cables to start charging.

- No mode button - just plug in the mains and connect the battery cables to start charging.
- Compact tough design - IP44 rated, suitable for outdoor use.
- Temperature sensor.
- Automatic detection of end-of-life batteries that eliminates unwanted surprises.
- 6 m cable and M8 ring terminals for permanent installation.

### TECHNICAL DATA

Voltage	28.8 V
Charging current	Max 14 A
Charger type	7 step, fully automatic charging cycle
Battery type	24 V lead-acid batteries
Battery capacity	28-300 Ah, maintenance charging up to 500 Ah
Degree of protection	IP44 (outdoor use)
Warranty	2 year warranty





# M100



PART NO. 56-386

The M100 is a fully automatic 8 step charger that supplies 7 A and is ideal for charging batteries between 14 and 150 Ah and up to 225 Ah for maintenance charging.

- Charges batteries from 14 Ah up to 150 A and maintains larger batteries up to 225 Ah.
- Compact tough design – splash resistant and dustproof to IP65.
- Optional cold/AGM program – more efficient charging for AGM batteries and in winter temperatures.
- Supply program – can be used as a 12 V power source to protect electrical settings.
- Recond program – special program to revive deeply discharged batteries.

## TECHNICAL DATA

Voltage	14.4/14.7/15.8/13.6 V
Charging current	Max 7 A
Charger type	8 step, fully automatic charging cycle
Battery type	12 V lead-acid batteries
Battery capacity	14–150 Ah, maintenance charging up to 225 Ah
Degree of protection	IP65 (splash and dust proof)
Warranty	5 year warranty





The M15 charges a wide range of marine batteries quickly and effectively.

The M15 is the perfect 15A battery charger for all boat owners. It has a range of functions, including a Recond mode for reconditioning deeply discharged WET and Ca/Ca batteries, and a temperature sensor which optimises the charge if the temperature deviates from +25°C. It also has a Lithium-Ion (LiFePO<sub>4</sub>) mode for LFP (LiFePO<sub>4</sub>) batteries. The M15 comes with a long 4m cable with M10 eyelets for easy installation on your boat.

- Dedicated Lithium-Ion (LiFePO<sub>4</sub>) mode.
- Recond program for deeply discharged batteries.
- AGM program for AGM batteries.
- IP44 classified for outdoor use.

## TECHNICAL DATA

Voltage	14.4/14.7/13.8/15.8 V
Charging current	Max 15 A
Battery type	All types of 12 V lead-acid batteries (WET, EFB, Ca/Ca, AGM, GEL) 12V (4 cells) Lithium batteries (LiFePO <sub>4</sub> , Li-Fe, Li-iron, LFP)
Battery capacity	LEAD-ACID: 28-300 ah, LITHIUM: 20-280 Ah
Degree of protection	IP44 (outdoor use)
Warranty	5 year warranty



The M25 is recommended for boat owners who need quick and effective charging for larger service batteries.

The M25 is the perfect 25A battery charger for all boat owners. It has a range of functions, including a Recond mode for reconditioning deeply discharged Wet and Ca/Ca batteries, and a temperature sensor which optimises the charge if the temperature deviates from +25°C. It also has a Lithium-Ion (LiFePO<sub>4</sub>) mode for LFP (LiFePO<sub>4</sub>) batteries. The M25 comes with a long 4m cable with M10 eyelets for easy installation on your boat.

- Dedicated Lithium-Ion (LiFePO<sub>4</sub>) mode.
- Recond program for deeply discharged batteries.
- AGM program for AGM batteries.
- IP44 classified for outdoor use.

## TECHNICAL DATA

Voltage	14.4/14.7/13.8/15.8 V
Charging current	Max 25 A
Battery type	All types of 12 V lead-acid batteries (WET, EFB, Ca/Ca, AGM, GEL) 12V (4 cells) Lithium batteries (LiFePO <sub>4</sub> , Li-Fe, Li-iron, LFP)
Battery capacity	LEAD-ACID: 40-500 ah, LITHIUM: 30-450 Ah
Degree of protection	IP44 (outdoor use)
Warranty	5 year warranty



## I2420/I2440



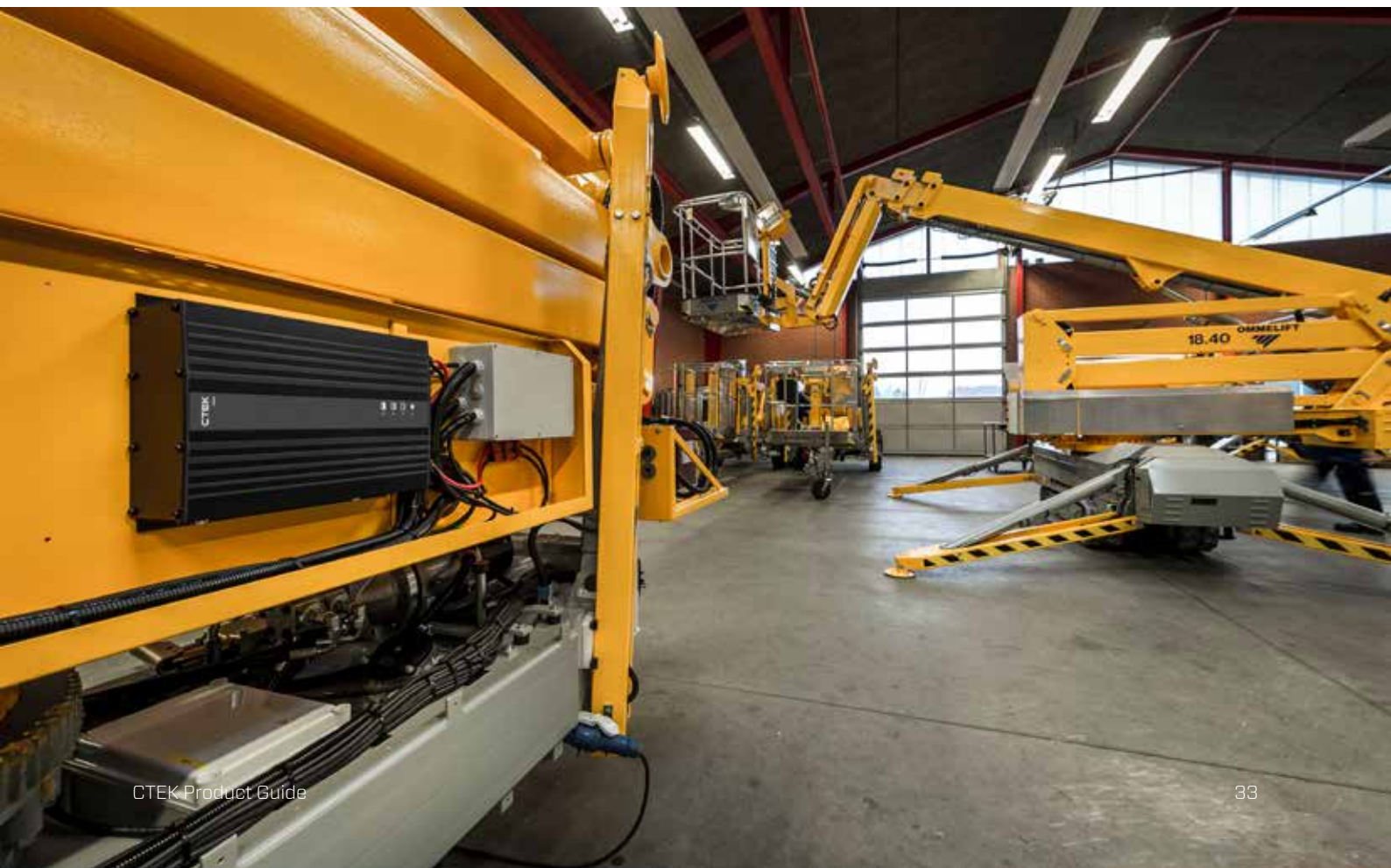
I2420: PART NO. 40-274  
I2440: PART NO. 40-275

The I2420 and I2440 chargers have been developed for use in tough environments. Constructed of black anodized aluminum, these robust chargers are completely sealed units fitted with vibration absorbers to further protect the unit. IP64 rated (water and dust proof) and supplied with a two-year warranty the I-Series range of chargers are built for long life.

- Multi step 24V, fully automatic 20 and 40A charger
- Charge algorithm for WET batteries is default in charger
- Customized Charge curves available
- RJ45 for communication & accessories
  - Status LED
  - Drive off protection
  - Temperature sensor
- All activity is logged (200 charge cycles)
- Intuitive and easy to read LED indicators
- Charge cable equipped with 50A power connector

### TECHNICAL DATA

Output	I2420: 28.8V, 20A max I2440: 28.8V, 40A max
Start voltage	0.5V
Conversion efficiency	Up to 94%
Ambient operating temperature	-20°C to +50°C
Ambient storage temperature	-40°C to +70°C
Battery types	24V: WET, can be customized for AGM, GEL, LiFePO <sub>4</sub>
Degree of protection	IP64
Warranty	2 years





# ACCESSORIES

*Our products are designed and developed to be as simple as possible to use. All CTEK chargers with output up to 10 A are supplied with quick connector, COMFORT CONNECT. There are several smart accessories for our quick connector, COMFORT CONNECT, to make battery care even easier. Connect with our smart accessories!*



## ACCESSORIES CTX



### CONNECT **EXTENSION**

This extension cable allows the CTEK charger to be used further away from the vehicle or battery.

Part no. 40-134



### INDICATOR **EYELET M8**

Practical for those batteries that are difficult to access. Shows the battery's charge level simply and clearly.

Part no. 40-133

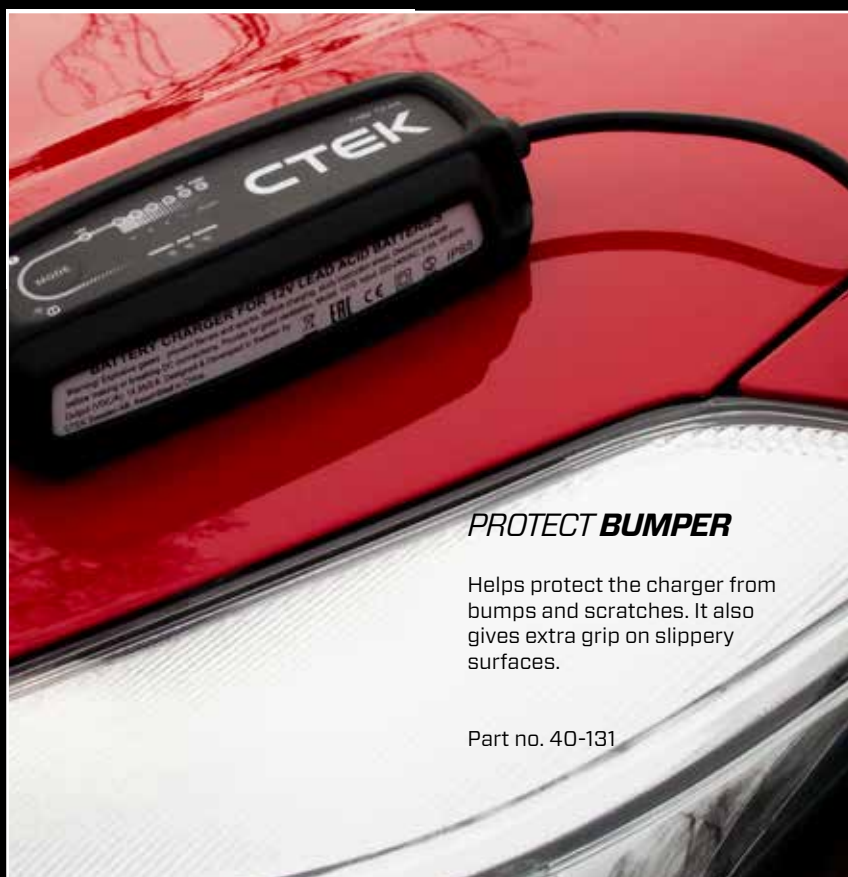


### INDICATOR **PLUG 12V**

INDICATOR PLUG 12V is a combined quick connector and indicator for easy charging. Perfect for checking status and charging the battery through the vehicle 12 V socket. Suitable for all 12 V CTEK chargers up to 7 A. INDICATOR PLUG 12V is a universal model that fits both 12 mm and 21 mm sockets.

*Note: Socket must be powered even when ignition is in "off" position.*

Part no. 40-165



### PROTECT **BUMPER**

Helps protect the charger from bumps and scratches. It also gives extra grip on slippery surfaces.

Part no. 40-131



### MOUNTING **BRACKET**

Robust and versatile mounting bracket for practical charger and cable storage.

Part no. 40-132

## COMFORT CONNECT



### COMFORT CONNECT - Eyelet

Comfort Connect is a handy accessory that enables you to charge batteries that are in hard to reach places or where using clamps is inconvenient or impossible. Comfort Connect - Eyelet is easy to fit, splash proof and dust proof. 400 mm cable length. Compatible with all CTEK chargers up to 10 A.

Eyelet M6 Part no. 56-260  
Eyelet M8 Part no. 56-261  
Eyelet M10 Part no. 56-329



### COMFORT CONNECT - Cig Plug

Comfort Connect - Cig Plug is an easy to fit adapter that allows charging from a CTEK compatible charger through the 12 V cigarette lighter or accessory socket. 400 mm cable length. Compatible with all CTEK chargers up to 10 A.

*Note: Socket must be powered even when ignition is in "off" position.*

Part no. 56-263



### COMFORT CONNECT - Cig Socket

Comfort Connect - Cig Socket is a useful accessory that increases the usage of the CTEK Comfort Connect battery connector. When the COMFORT CONNECT - Cig Socket has been connected, it allows you to use GPS, mobile phones, handlebar heaters and heated clothing etc. 1 m cable length.

Part no. 56-573



### COMFORT CONNECT - 2.5M Extension Cable

Useful extension cable which allows any CTEK charger up to 10 A to be connected to other accessories such as clamps or quick connectors (Comfort Connect). Handy when charger has to be placed some distance from the battery. 2.5 m cable length.

Part no. 56-304



## COMFORT INDICATOR



### COMFORT INDICATOR - Eyelet

Comfort Indicator – Eyelet M6 and M8 use a simple ‘traffic light’ system to show the state of charge of your battery. With Comfort Indicator – Eyelet you have a permanent installation. Should charging be required plug in the CTEK charger and charge the battery. Cable length 500 mm.

Eyelet M6 Part no. 56-629  
Eyelet M8 Part no. 56-382



### COMFORT INDICATOR - Cig Plug

Comfort Indicator – Cig Plug is a combined quick connector and indicator for easy charging. Perfect for checking status and charging the battery through the vehicle 12 V socket. Suitable for all 12 V CTEK chargers up to 7 A. Comfort Indicator – Cig Plug is a universal model that fits both 12 mm and 21 mm sockets.

*Note: Socket must be powered even when ignition is in “off” position.*

Part no. 56-870



### COMFORT INDICATOR - Clamp

Comfort Indicator – Clamp uses a simple ‘traffic light’ system to show the state of charge of your battery. Easy to move between vehicles, – ideal for workshops and show-rooms. Should charging be required the cap can be removed from the unit and a compatible CTEK charger plugged in to restore the battery to fully charged status. Cable length 1.5 m.

Part no. 56-384



### COMFORT INDICATOR - Pigtail

CTEK Comfort Indicator – Pigtail converts an existing SAE quick connector into a sealed indicator of the status of your battery. It also opens up for charging with a CTEK 12 Volt charger CTEK Comfort Indicator can prolong the life expectancy of the battery as it makes sure it can always be fully charged and it indicates when the harmful sulfation process begins.

Part no. 56-564



### COMFORT INDICATOR - Panel

Comfort Indicator – Panel uses a simple ‘traffic light’ system to show the state of charge of your battery. Available in two cable lengths, 1.5 m and 3.3 m. No cables are included in the Comfort Indicator – Panel with flat pin connection.

Panel M8 (1.5m) Part no. 56-380  
Panel M8 (3.3m) Part no. 56-531  
Panel (Flat Pin) Part no. 56-562

## COMFORT INDICATOR

Comfort Indicator is the easiest way to monitor the charge in your battery. An accurate reading for your battery is displayed two hours after you’ve used your vehicle.



**GREEN** means the battery charge is more than 12.65 V.  
OK! No need for charging.

**YELLOW** means the battery charge is between 12.4 and 12.65 V. It’s time to start thinking about charging the battery.

**RED** means the battery charge is below 12.4 V. It’s definitely time to charge the battery.



## ACCESSORIES



### CTEK BUMPER

CTEK BUMPER helps protect your CTEK charger from bumps and scratches. Adds extra grip on slippery surfaces. Made of durable silicon rubber material. The CTEK BUMPER fits snugly around the body of your CTEK charger.

**CTEK BUMPER 10** | Part no. 40-057  
Suitable for all CTEK chargers 0.8 A.

**CTEK BUMPER 60** | Part no. 56-915  
Suitable for all CTEK chargers 3.8–5.0 A.

**CTEK BUMPER 100** | Part no. 40-058  
Suitable for all CTEK chargers 7.0 A.

**CTEK BUMPER 120** | Part no. 40-059  
Suitable for all CTEK chargers 10 A.



### CTEK SYSTEM MONITOR

The unit continually monitors the voltage, the current (charge and discharge) and calculates the state of charge together with the time remaining to charge or discharge the battery.

**100A:** Part no. 40-245  
**200A:** Part no. 40-484

### CTEK MOUNTING BRACKET

Robust and versatile mounting bracket for practical charger and cable storage. Open frame design allows easy access to charger functions.

- Practical storage of charger and cables
- Open frame design allows easy access to charger functions.
- Suitable for all CTEK chargers 3.8–5.0 A

Part no. 40-006



### EXTERNAL LED CABLE - 2.5M

Cable with RJ45 connector for remote LED indication of charging status. Perfect for monitoring the status when the charger is installed where not visible.

Suitable for I2420 (40-274) and I2440 (40-275).

Part no. 40-372

## PRO ACCESSORIES



### COMFORT CONNECT - XLR

Comfort Connect - XLR is a useful accessory that allows you to connect the CTEK MXT 4.0 charger easily and directly to the XLR socket found on many 24 V powered wheelchairs and mobility scooters. 3 Pin XLR connection, 400 mm cable length.

Compatible with CTEK MXT 4.0 (4 A).

Part no. 56-867



### BUMPER 300

CTEK BUMPER helps protect your CTEK charger from bumps and scratches. Adds extra grip on slippery surfaces. Made of durable silicon rubber material. The CTEK BUMPER fits snugly around the body of your CTEK charger.

Suitable for CTEK chargers MXS15, MXS25, MXS25EC, MXT14, M200, M300

Part no. 40-060



### WALL HANGER 300

WALL HANGER 300 (wall hanger) has been specially designed to allow the larger CTEK chargers to be mounted on wall, ramp posts or hung off vehicle doors. The WALL HANGER 300 comprises a plate that can be attached directly to the back of the charger (screws provided) with a hook for safely storing cables. A mounting plate, BRACKET, is included and can be mounted on walls or ramp posts. The wall hanger has rubber feet to avoid scratching vehicle paintwork.

Suitable for use with:  
MXS 25, MXT 14, M200, M300

Part no. 56-314

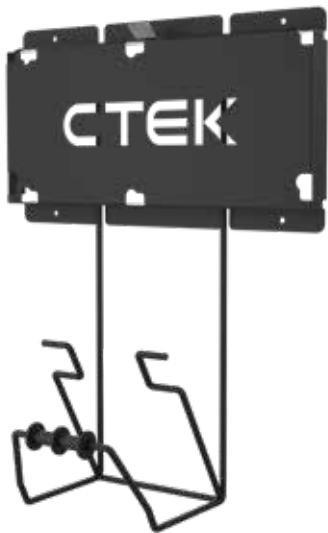


### WALL HANGER PRO

WALL HANGER PRO has been specially designed for easier handling and storage of CTEK MXTS 40 or MXTS 70/50. WALL HANGER PRO allows the charger to be mounted on the wall using the enclosed mounting plate, bracket, or to be carried around thanks to the strap. The rubber coated frame protects against scratches and makes it steadier.

Suitable for use with:  
MXTS 40, MXTS 70/50

Part no. 40-068



### **WALL HANGER PRO 60/PRO 120**

WALL HANGER PRO 60/PRO 120 allows tidy cable and clamp storage.

Suitable for use with:

- PRO 60
- PRO 120

Part no. 40-374



### **TROLLEY PRO**

The TROLLEY PRO is designed to carry a wide range of charging and testing equipment safely. Its tough, black powder coated steel frame and four wheels make the TROLLEY PRO easily manoeuvrable – even in small spaces – but the two wheel brakes keep it firm and still while you're using it. Plus, there are plenty of hooks for neat cable storage and its versatile, pre-drilled panel lets you mount your preferred CTEK pro charger combination right where you want it.

- Versatile test station for charger, testers and batteries.
- Perfect for Flash programming/updating.
- Pre drilled panel to mount multiple CTEK Pro charger combinations.
- Robust steel construction with four wheels.
- Durable black, powder coated finish.

Suitable for use with:

MXS 25, MXT 14, MXTS 40, MXTS 70/50,  
PRO60 (with Trolley Adapter - Art No 40-227)  
PRO60/PRO120 (with Trolley Adapter - 40-246)

Part no. 56-604



## SPARE PARTS



### NTC CABLE - 1.7M

1.7 metre temperature sensor cable.

Suitable for:  
MXS 10

2 year warranty.

Part no. 40-141



### CLAMP SHELLS - Red & Black

Replacement positive and negative terminal clamp shell set.

Suitable for:  
MXS 10EC, MXS 15, MXS 25,  
MXS 25EC, XS 25000, MXT 14,  
Multi XT 14000 Extended, XT 14000

2 year warranty.

Part no. 40-147



### AC CABLE - EU Plug

AC Cable with EU plug only.

Suitable for:  
MXTS 70/50, MXTS 40

2 year warranty.

Part no. 40-146



### DC CABLE - 5M

5 metre DC cable including heavy duty clamps.

Suitable for:  
MXTS 70/50

2 year warranty.

Part no. 56-759



### CLAMPS - Red

Heavy duty replacement positive terminal clamp.

Suitable for:  
MXTS 70/50

2 year warranty.

Part no. 40-143



### CLAMPS - Black

Heavy duty replacement negative terminal clamp.

Suitable for:  
MXTS 70/50

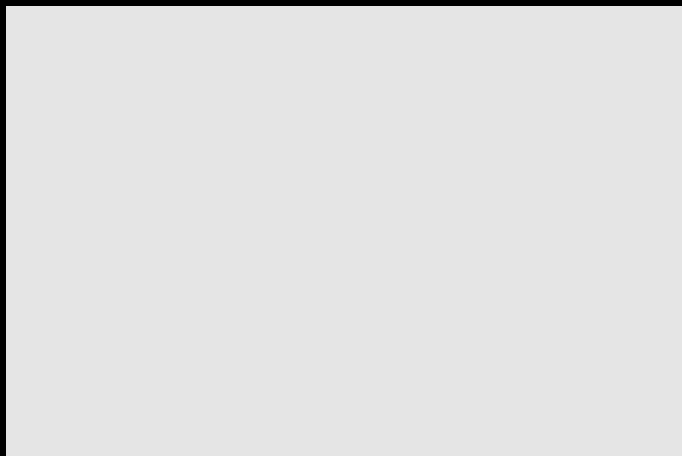
2 year warranty.

Part no. 40-142



***MAXIMIZING BATTERY PERFORMANCE*** / [WWW.CTEK.COM](http://WWW.CTEK.COM)





**CTEK** | **MAXIMIZING  
BATTERY  
PERFORMANCE**

---

CTEK SWEDEN AB  
ROSTUGNSVÄGEN 3, SE-776 70 VIKMANSHYTTAN, SWEDEN  
PHONE: + 46 225 351 80 | FAX: + 46 225 351 95  
INFO@CTEK.COM | [WWW.CTEK.COM](http://WWW.CTEK.COM)