



BEAD BAZOOKA® 6L²
Gaither PROFESSIONAL EQUIPMENT

Gaither
PROFESSIONAL EQUIPMENT

HOME OF THE LEGENDARY BEAD BAZOOKA®
THE MOST POWERFUL TIRE BEAD SEATING TOOL IN THE WORLD

HALF THE SIZE TWICE THE POWER

BEAD BAZOOKA® BY GAITHER FEATURES SEVEN UPGRADES FROM THE FIRST GENERATION

1. Three-Way Control Cluster on top of the tank for the intake valve, pressure gauge, and safety pop-off valve makes for more comfortable use and provides room for the new 2" RAR Valve. It also reduces the number of holes drilled into the tank, providing improved structural integrity for longevity.
2. 2" RAR Valve (**patented**) is completely redesigned to "float" inside the chamber and it releases twice as quickly as Gaither's previous 1.5" valve.
3. 2" RAR Valve is completely serviceable: it can be removed for cleaning and easily replaced if needed. It also provides a convenient opening for regular tank inspection.
4. **Patented**, recoil-reducing barrel narrows towards the tip, which accelerates the existing air as it moves through the exhaust slot. This increases the bead seating power and reduces recoil.
5. The barrel never needs to touch the tire or the wheel assembly. Keeping the barrel 1 - 5" (based on the tire) away from the bead gap increases peak performance by allowing the air to flow more freely.
6. Because of the increased operating efficiency, all three models have been reduced in size and weight, making them all easier to hold and use without sacrificing power.
7. The Bead Bazooka® GEN2 meets or exceeds the specifications required for ASME, CE, and TUV certification. All three models use narrower tank designs, increasing the construction's strength and integrity, which improves longevity and safety.

GAITHER'S NEXT GENERATION BEAD BAZOOKA® IS HERE

Gaither
PROFESSIONAL EQUIPMENT

Introducing the Bead Bazooka® GEN2, the most advanced bead seater ever made. It is capable of handling a huge range of tires, while being compact enough for easy storage and operation.

The Bead Bazooka® GEN2 utilizes an upgraded version of the rapid air release (RAR) valve technology found in the original Bead Bazooka®. Allowing all of the new models to be smaller, lighter, and deliver more power with the same ultra-convenient trigger release. The valve is also easily serviced or replaced so that you can expand its service life and maximize uptime. These compact monsters are set to become the new workhorse in your workshop arsenal!

- Serviceable/Replaceable 2" RAR VALVE upgraded from 1.5"
- Lightweight design saves your back and your time
- Utilizes ultra-compact design: **LESS REALLY IS MORE!**
- Anti-corrosion interior tank coating extends service life



**BEAD BAZOOKA®
VALVE REPAIR KIT
BBVRK**

**WATCH
VIDEO**



// GAITHERTOOL.COM

THE NEXT GENERATION OF BEAD BAZOOKAS

3Y
LIMITED
WARRANTY

- 3-WAY CONTROL CLUSTER
- REDESIGNED BARREL
- SERVICEABLE/REPLACEABLE 2" RAR VALVE
- TRIGGER RELEASE
- ULTRA-COMPACT DESIGN
- ANTI-CORROSION INTERIOR TANK COATING
- MORE POWERFUL THAN PREVIOUS MODELS
- LIGHT WEIGHT
- THE SAFEST CHOICE

BEAD BAZOOKA
Gaither PROFESSIONAL EQUIPMENT

GAITHER'S BEAD BAZOOKA® V2

BB03L2

- Volume: 3L and 145 PSI / 10 bar pressure
- Works with ATV, motorcycle, car and light commercial vehicles
- Ultra-compact 3L Tank
- Serviceable/Replaceable 2" RAR Valve
- 3-Way Control Cluster
- Anti-corrosion Interior Tank Coating
- Trigger Release
- Recoil-reducing Barrel
- Net Weight 6,3 kg



6,3 KG 584 x 152 x 305 mm

GAITHER'S BEAD BAZOOKA® V2

BB06L2

- Volume: 6L and 145 PSI / 10 bar pressure
- For motorcycle, car, light truck and heavy commercial vehicles
- Ultra-compact 6L Tank
- Serviceable/Replaceable 2" RAR Valve
- 3-Way Control Cluster
- Anti-corrosion Interior Tank Coating
- Trigger Release
- Recoil-reducing Barrel
- Net Weight 7,7 kg



7,7 KG 584 x 177,8 x 305 mm

GAITHER'S BEAD BAZOOKA® V2

BB10L2

- Volume: 10L and 145 PSI / 10 bar pressure
- For car, light truck, heavy commercial and light agricultural vehicles
- Ultra-compact 10L Tank
- Serviceable/Replaceable 2" RAR Valve
- 3-Way Control Cluster
- Anti-corrosion Interior Tank Coating
- Trigger Release
- Recoil-reducing Barrel
- Net Weight 9,5 kg



9,5 KG 762 x 177,8 x 305 mm

BEAD BOOSTER®

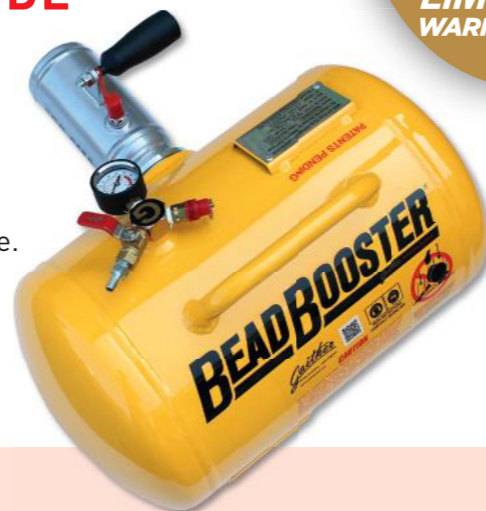
CLASSIC LOOK - ALL NEW ATTITUDE

GAITHER'S BEAD BOOSTER® GB-5MA

The Bead Booster GB-5MA is one of the latest bead seaters from Gaither. It comes equipped with our patented 2" RAR Valve.

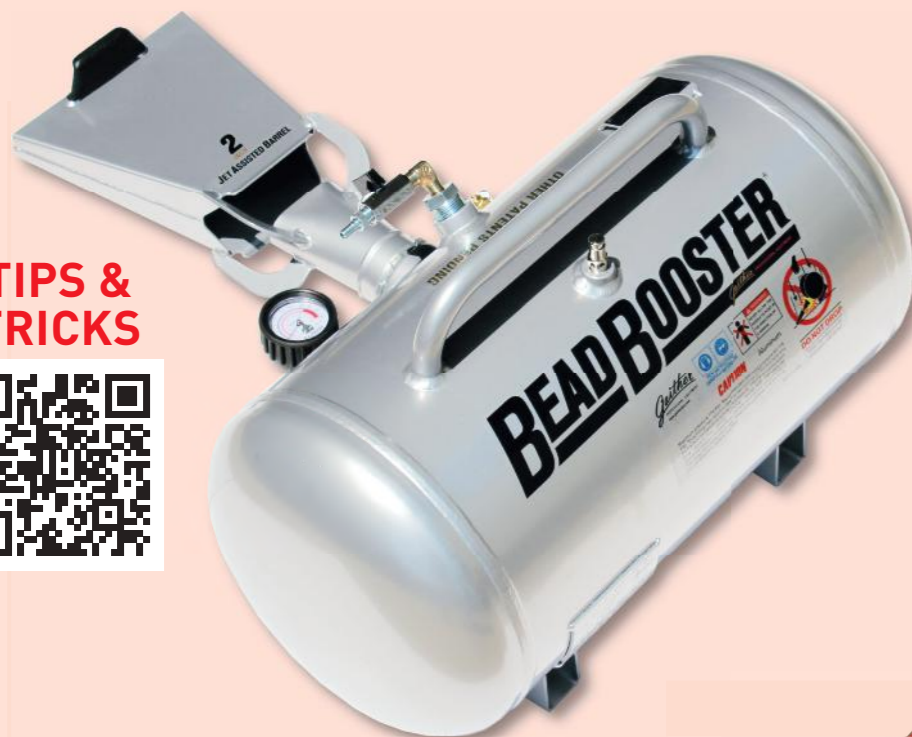
- For commercial light vehicles, truck (wide base) and a variety of AG tires
- The tank is CE/ASME certified
- 2" RAR Valve
- Internal proprietary coating protects tank against rust

CE UK
CA



3Y
LIMITED
WARRANTY

TIPS & TRICKS



GAITHER'S BEAD BOOSTER® GB-38L

- For truck and agricultural tires
- CE certified tank
- Internal proprietary coating protects tank against rust
- 2" Jet Assisted Barrel
- Alloy tank
- Volume 38L and 10 bar pressure
- Weight: 8,5kg

CE UK
CA



GAITHER 101-BEAD SEATER

Economic inflation tool with a 20L tank. Valve opens manually. Safety pack included.

- Internal proprietary coating protects tank against rust
- CE certified tank
- Weight: 13kg
- 3-Year warranty

CE UK
CA

GAITHER

12941R & 12942R

- The Gaither RAR Valves are the most powerful inflation valves available - same as used on the popular Bead Bazookas®.
- 1.5" and 2" available to upgrade your current bead seater with manual Ball Valve.
- Completely serviceable!! This means that if something should become defective down the road, the seal, valve or spring can all be replaced!
- Push-button release trigger allows the technician to keep both hands on the tank for optimum control during use.
- Reversible handle allows for both right-hand and left-hand users based on preference.
- Each valve includes a barrel for immediate use after installation.



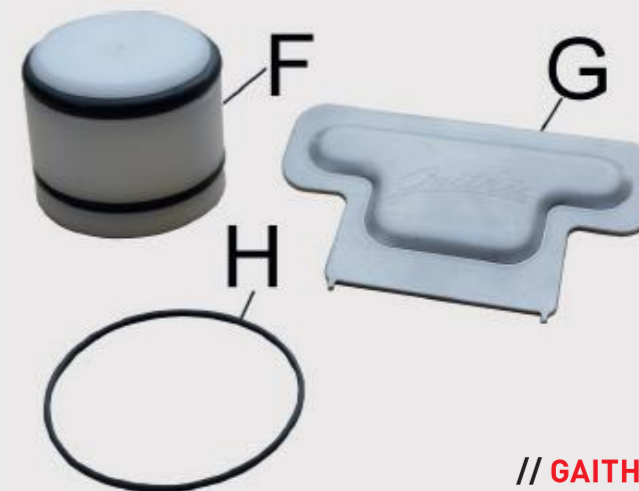
GAITHER

BBVRK

The Bead Bazooka® Valve Repair Kit, or BBVRK, is a new tool that lets the user repair/replace the piston/valve of the Bead Bazooka®. The BBVRK is intended to extend the lifespan of the Bead Bazooka® by making the Bead Bazooka® fully serviceable. This kit saves the user precious time because the repairs can be done quickly and effectively in house.

The BBVRK comes with following items:

- F. 12958 2" Piston w / O-Ring
- G. 12959 Gaither Wrench
- H. 12950 W 1.5 O-Ring



// GAITHERTOOL.COM

Gaither
PROFESSIONAL EQUIPMENT

GAITHER GT SERIES

PROVEN QUALITY

Heavy duty, air service jacks. Ideal for mobile service and workshop duty.
3-Year limited warranty.

Experience the difference today!

GT JACKS INCLUDE 2 EXTENSIONS



DETAILED SPECS & DRAWINGS VISIT
GAITHEREUROPE.COM

GAITHER GT 6033

Our new 60T 3-stage jack comes with following features:

- Controlled descent
- Hard chrome plated internal and external cylinders
- XTP seals
- Safety valve
- Self-return switch for maximum safety

SPECIFICATIONS

- Low profile, high capacity
- Min. height: 150mm
- Max. height: 327mm without extensions
- Length: 975mm
- Width: 285mm
- Height: 1370mm
- 3 stage, 60/40/20T
- Extensions 45-75 mm
- **3-Year limited warranty**

CE UK CA



GAITHER GT 3031

Affordable all-rounder.

- Standard height
- Min. height: 170mm
- Max. height: 256mm without extensions
- Length: 585mm
- Width: 283mm
- Height: 1380mm
- 1 stage, 30T
- Extensions 45-75 mm
- **3-Year limited warranty**

CE UK CA



GAITHER GT 3532 AG

Ideal for agricultural and construction vehicles.

- Min. height: 360mm
- Max. height: 627mm without extensions
- Length: 840mm
- Width: 294mm
- Height: 1370mm
- 1 stage, 35T
- Extensions 45-100 mm
- **3-Year limited warranty**

CE UK CA



GAITHER GT 4033

Our ultra low 3-stage jack at a price that no one beats!

- Short body, low profile
- Min. height: 125mm
- Max. height: 274mm without extensions
- Length: 526mm
- Width: 263mm
- Height: 1290mm
- 3 stage, 40/22/10T
- Extensions 45-75 mm
- **3-Year limited warranty**

CE UK CA



GAITHER GT 4533

Preferred choice of tire service organizations throughout the world.

- Low profile
- Min. height: 150mm
- Max. height: 279mm without extensions
- Length: 600mm
- Width: 290mm
- Height: 1380mm
- 2 stage, 45/20T
- Extensions 45-120 mm
- **3-Year limited warranty**

CE UK CA



GAITHER GT 4534

Ultra slim design for buses and low clearance vehicles.

- Low profile
- Min. height: 125mm
- Max. height: 276mm without extensions
- Length: 835mm
- Width: 295mm
- Height: 1380mm
- 3 stage, 45/20/10T
- Extensions 45-120 mm
- **3-Year limited warranty**

CE UK CA



GTJ-01

TRAC TIRE JACK

Gaither's newest wheel leverage tool is simple in design and drastically helps technicians when mounting and demounting heavy wheel assemblies to and from a vehicle's hub.

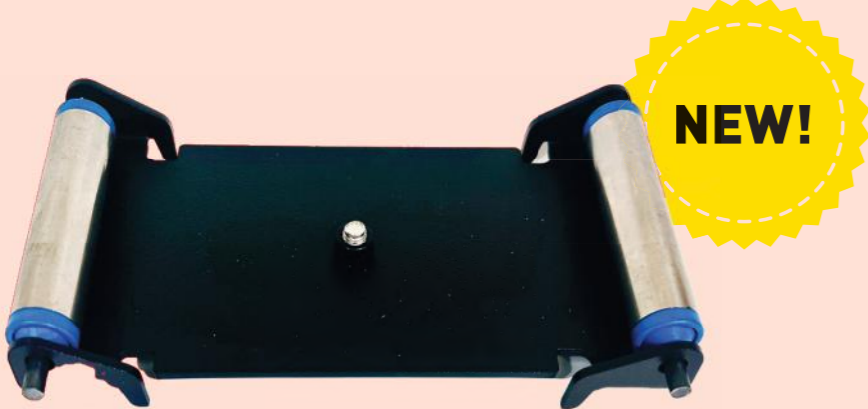
The TRAC Tire Jack simply slides under the tire and wheel and allows the technician to roll the wheel into place. Through the use of leverage, the TRAC Tire Jack saves users time and their backs.

Use the Jack and not your back!

GTRP-01

TRAC ROLLER PLATE

The TRAC Roller Plate Accessory for the TRAC Tire Jack allows for an easier alignment of the holes of the wheel to the studs of the hub.



GAITHER 12894C

Heavy bead keeper used to assist in the tire-mounting process. Rubber coated to protect from scratching rims.



GAITHER 12894CW

Wide claw bead keeper. Rubber coated to protect from scratching rims.



GAITHER 12894

Same as 12894C but without coating.

GAITHER GT10-3

Third hand bead keeper spring type.



GAITHER GTM

Tire Mop used for applying lubricant to the tire bead and wheel flange.



GAITHER GTS-01

Tire Spreader designed to spread tire beads quickly to make tire repairs easier than ever!



GAITHER 12960

Premium Black tire mounting paste 5kg.
made in Germany



GAITHER 12965

Premium White tire mounting paste 5kg.
made in Germany



GAITHER 12966

Premium Transparent tire mounting paste 5kg.
made in Germany



GAITHER 12967

Premium Transparent tire mounting paste 3kg.
made in Germany

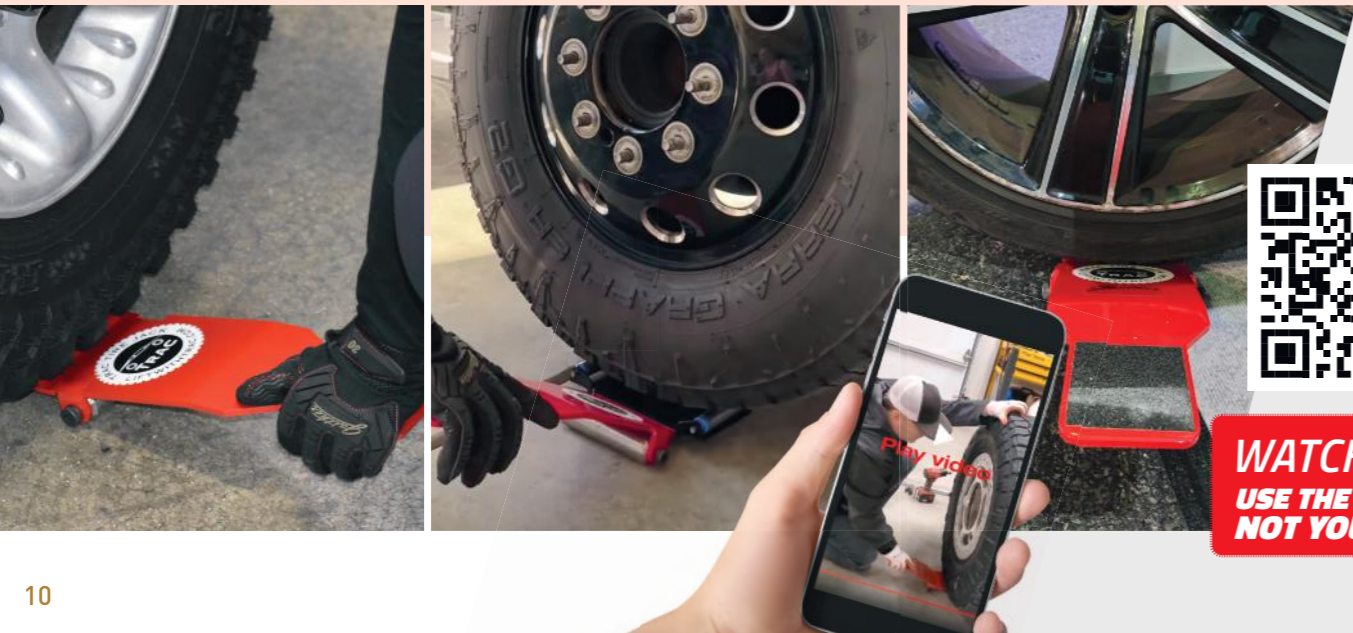


GAITHER 12904

Gaither's Super Slick'em. The original. Unmatched in terms of effectiveness for mounting and demounting. A non-water based lubricant that will not cause rust and will not freeze.



WATCH DEMO
USE THE JACK AND
NOT YOUR BACK!



12880E - BEAD SAVER

THE FAMOUS, ALL-IN-ONE TOOL SOLUTION.

The famous, all-in-one tool solution for tire mounting and demounting without damaging the tire bead. Cost friendly, easy to learn and does not require a lot of physical strength because it works on principals of leverage.

Over 250,000 satisfied users worldwide including service departments, defense departments, individual owner/operators, and general workshops. Also recommended by Michelin training centers. Suitable for tubeless truck tires from 17,5" up to 24,5" including super singles and low profile tires.

SPECIFICATIONS

Tire size: 17,5"-24,5"
Weight: 35 Kg

WATCH VIDEO



GAITHER 12772 MANUAL TIRE CHANGER

The next generation 12772 manual tire changer offers a heavy duty design and all new clamping system. Equipped with a variety of accessories, this standalone, portable device can be operated easily without the need for electrical- or pneumatic power.

Due to its robust framework and tire mounting- and demounting lever it becomes possible to change a large variety of tires which sets it apart from alternatives in the market.

The included adaptor ensures precise clamping and centering of wheels from 4"-21".

The ideal solution while servicing motor cycle, scooter, ATV, car, racing and 4x4 tires.

SPECIFICATIONS

Tire size: 4"-21"
Weight: 35 Kg

TOOL4LIFE!
COPIED OFTEN
NEVER EQUALLED



GAITHER GTO-01TB

Patented tool designed to make it easier and safer to install wheels back on their studs.

GAITHER GTABB-01

Gaither's patented pneumatic bead breaker is recommended for agricultural tires and most of the common truck tires as long as one properly lubricates the bead area prior to breaking.

This light weight tool with air regulator is extremely fast and easy to use without risking bead damage. The tool comes with a blow case and requires a minimum of 6 Bars completed with 115 L/M.

GAITHER 12045

Mount/demount bar

GAITHER 12027B

Heavy Duty slide hammer bead breaker 13kg.

GAITHER BVA-3

Adaptor bridge for BV-04 allows the user to break the bead past the hump on the any side of the Wheel.

GAITHER GTGD50/51

- The toughest digital tire pressure gauge and Inflator on the market
- With its durable design & rubber boot, this inflator is not only comfortable to use, but also strong enough to withstand the punishment of any shop
- Chuck style: Dual angle (GTGD50) / Single Clip-on (GTGD51)
- Hose length: 500 mm (GTGD50) / 1800 mm (GTGD51)



GAITHER J-1 TOOL

2 Pc ergonomic J1 system (17,5" to 24,5" up to 315 width).

GAITHER BV-04

Gaither's Bead Vice offers a simple but efficient way to break tire beads loose on hump (EVA) wheels when used in combination with Super Slick'em.



GTF-01

FORCE WHEEL WEIGHT TOOL.

All-in-one hammer and pry tool.

The GT FORCE Wheel Weight Tool is the solution for precision, balance, and performance! This 2-in-1 wheel weight tool has one magnetic end for application and another hook end for removal.

SAVE TIME, SAVE YOUR FINGERS - LOSE THE HAMMER



THE BEADS

NOTHING BEATS OUR BEADS.

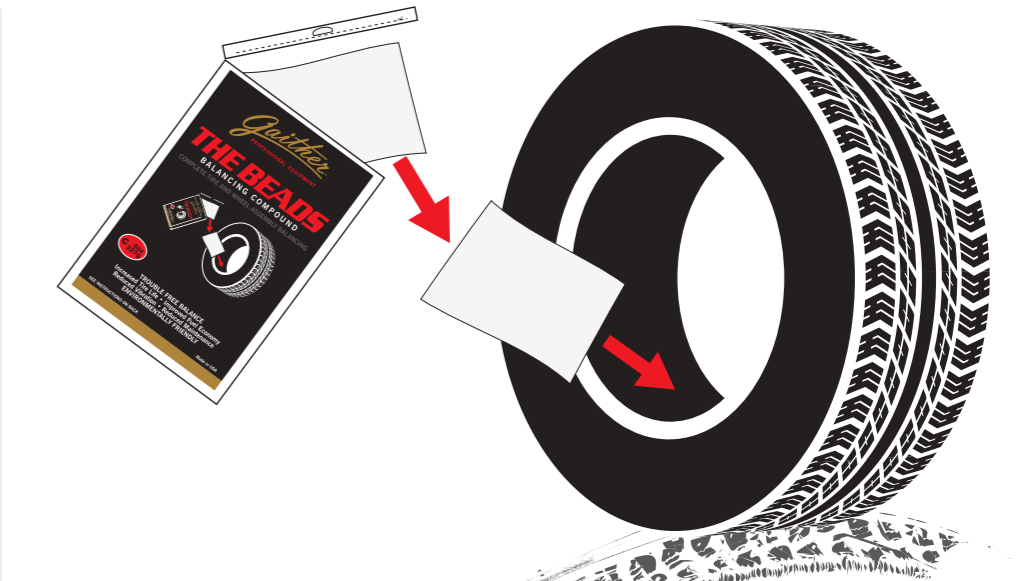


The ultimate tire and wheel assembly balancing solution.

It's a premium, internal balancing compound that provides an accurate, continual balance within the tire/wheel assembly for the life of the tread. Its ability to quickly adjust to the changing imbalance conditions provides the correct and perfect method of being able to balance all wheel assemblies resulting in fuel, labor & tire savings.

Benefits

- Trouble Free Balance
- Increased Tire Life
- Improved Fuel Economy
- Reduce Vibration
- Reduce Maintenance
- Environmentally Friendly



HOW ARE THE GAITHER BEADS USED?

There are two methods of installing The Gaither Beads inside the tire. The Gaither Beads comes in an outside plastic package:

1. Tear open and find inside a thin mil plastic bag of The Gaither Beads. Toss the inner bag into the tire; mount and inflate. Upon driving, The Gaither Beads inner bag will open releasing the product inside the tire.
2. If the tire has already been mounted, The Gaither Beads can be installed through the valve stem using an applicator pump.

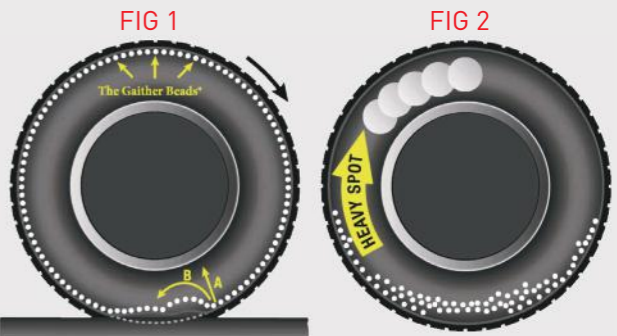
The ultimate tire and wheel assembly balancing solution

TB-403	Gaither Beads 85g Balancing Compound Throw-In Bag
TB-404	Gaither Beads 113g Balancing Compound Throw-In Bag
TB-405	Gaither Beads 142g Balancing Compound Throw-In Bag
TB-406	Gaither Beads 170g Balancing Compound Throw-In Bag
TB-408	Gaither Beads 227g Balancing Compound Throw-In Bag
TB-4010	Gaither Beads 282g Balancing Compound Throw-In Bag
TB-4012	Gaither Beads 340g Balancing Compound Throw-In Bag
TB-4014	Gaither Beads 397g Balancing Compound Throw-In Bag
TB-4016	Gaither Beads 454g Balancing Compound Throw-In Bag

HOW DO THE BEADS WORK?

Fig. 1: As the tire/wheel assembly begins to rotate, The Gaither Beads is distributed around the inner circumference of the tire. Cushioning effect: A = vertical and B = lateral speed up by forming of the footprint.

Fig. 2: As the centrifugal force increases, the heavy spot of the tire/wheel assembly pulls up and down on the vehicle suspension causing The Gaither Beads to adjust/move in the opposite direction thus resulting in a balanced tire/wheel assembly.



ABOUT US

Gaither Tool Co. founded in 1988, is an international organization committed to serving the tire and trucking industry. It invents and manufactures convenient tools and systems needed to service and maintain tires and wheel assemblies.

Gaither Tool Co. continually invests in research and development to bring to its customers the most effective tools in the business. It strives to improve efficiency and reduce costs for customers all over the world working in truck maintenance shops as well as on-the-road tire service providers. Bandag, Euromaster/Michelin, Bridgestone's First Stop, The United States Armed Forces... just to name a few.

Gaither supplies products to customers in over 100 countries, selling through exclusive and nonexclusive distributors. Gaither Tool Co. is headquartered in Jacksonville, Illinois, U.S.A. In 1997 it opened a branch office located in Roosendaal, Holland to better serve the European market. In 1999 that office was incorporated in Holland and Gaither Europe BV was started. Gaither's manufacturing plant and warehousing for International distribution is located in Taichung, Taiwan.

With a strategically placed location in both The United States and The Netherlands, we are able to serve the global industry



CONTACT US

GAITHERTOOL.COM

GAITHER TOOL CO.

2255 West Morton Ave.
Jacksonville, Illinois 62650
USA

t +1 217 245 0545
e sales@gaithertool.com

GAITHER EUROPE BV

Rechtzaad 6
4703 RC Roosendaal
The Netherlands

t +31 (0)165 554475
e info@gaithereurope.com

