



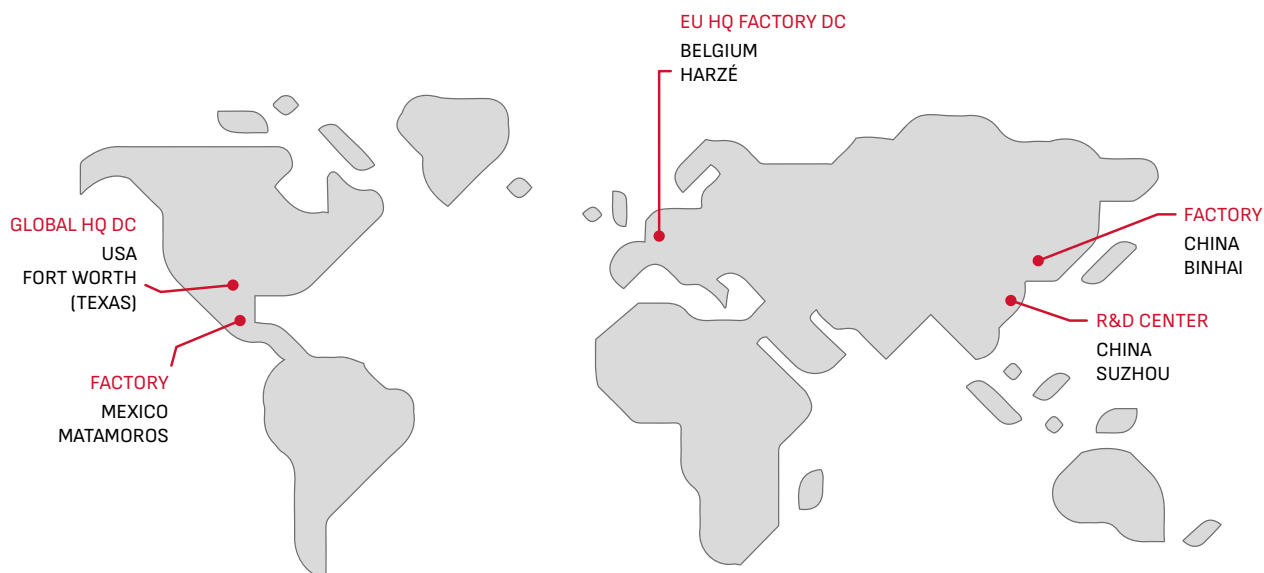
Keep it rolling.™

EUROPEAN PRO CATALOG 2023-2024

Schumacher is driven by its commitment to innovation and the highest quality at an optimized cost.

We design and manufacture battery chargers, inverters, AGM or lithium jump starters, 12 V accessories, chargers for electric and hybrid vehicles for the retail and professional markets.

With plants in Mexico, Belgium, and China we are able to efficiently supply on a worldwide basis.



Since
1947



Keep it rolling.™



EVSERIES™



ELECTRIC CHARGER
SEV455



EV Series

Lithium
Jump starters

AGM
Jump starters

Electronic
chargers

Electromechanical
chargers

Battery testers

Worklights

EVSERIES™





EV SERIES™

SEV455



+++

Attractive design with ergonomic-designed connector

5m cable length, with a flexible cable management

Durable, weatherproof housing (IP 66)

Easy to install

Dynamic LED status

Wi-Fi

TECHNICAL INFORMATION

MODEL	SEV455
Input	AC 220-240 V, 50-60 Hz
Rated current max	Single phase 32 Amp
Plug type	Type 2
Rated output power	7,4 kW
Wi-Fi connected	Yes
Operating temperature	-30° C to +50° C
Installation location	indoor/outdoor (IP 66)
Installation type	Hardwired*
Power wiring	3 wires single phase L, N + Ground
Cable Length	5 m cables (Type2)
Certification	CE

* Hardwired installation requires a certified electrician and compliance with country electrical guidelines.

LITHIUM JUMP STARTER
SL474



Worklights

Battery testers

Electromechanical
chargers

Electronic
chargers

AGM
Jump starters

Lithium
Jump starters

EV Series



SL 471 ⚡ 12 V 🔌 300 CA / 600 PA



+++

4-cell technology

LED charge level

Compact design

Pre-Boost for ultimate cold temperature starting

USB output 2,4 A

Lightweight

Powerful battery pack

Soft Touch

Built-in LED area light (3 modes)





LITHIUM JUMP STARTER

12 V

SL 472
500 CA
1000 PA

SL 473
750 CA
1500 PA

SL 474
1000 CA
2000 PA



+++

4-cell technology

3.0 A USB Port – charge 4x faster

Carrying case

Pre-Boost for ultimate cold temperature starting

LCD Screen

Soft touch and compact design

Powerful battery pack

Built-in LED area light (3 modes)

Wireless charging



SL RANGE



TECHNICAL INFORMATION

MODEL	SL 471	SL 472	SL 473	SL 474
PART NUMBER	94065471	94065472	94065473	94065474
VOLTAGE	12 V	12 V	12 V	12 V
PEAK AMPS	600	1000	1500	2000
WIRELESS CHARGE	NO	10W	10W	10W
INPUT USB CHARGE	USB-C	USB-C	USB-C	USB-C
OUTPUT USB POWER	2,4 A	2,4 - 3 A	2,4 - 3 A	2,4 - 3 A
CABLE LENGTH	0,45 m	0,45 m	0,45 m	0,45 m
CABLE CROSS SECTION	5,27 mm ² (10 GA)	5,27 mm ² (10 GA)	5,27 mm ² (10 GA)	8,37 mm ² (8 GA)
LED LIGHT	YES	YES	YES	YES



PACKAGING INFORMATION

MODEL	SL 471	SL 472	SL 473	SL 474
NET WEIGHT	0,76 kg	1,1 kg	1,2 kg	1,33 kg
DIMENSIONS (L x W x h) mm	202 x 112 x 73	245 x 130 x 115	245 x 130 x 115	245 x 130 x 115

HOW TO CHOOSE

PART NUMBER	MODEL	VOLTAGE	12 V					
			<75*	120	150	165	190	275
HP* = CHECK YOUR ENGINE HP - LEGEND: ■ NORMAL ■■ INTENSIVE								
94065471	SL 471	12 V	■					
94065472	SL 472	12 V	■■	■■	■	■		
94065473	SL 473	12 V	■■	■■	■■	■	■	
94065474	SL 474	12 V	■■	■■	■■	■■	■■	■



GIGALITHIUM ⚡ 12 V 🔌 800 CA



Docking station & battery charger

+++

4-cell lithium LiFePO4
100% safe

Lightweight

LCD screen

Microprocessor controlled

Protection against
over discharge

Protection against
over charge

Protection against
over temperature

Protection against
reverse polarity

Protection against
short circuit

Protection against
voltage error and overload

Override mode

Memory saver





GIGALITHIUM ⚡ 12/24 V 🔌 2000/1000 CA



Docking station & battery charger

+++

4-cell lithium LiFePO4 100% safe	Protection against over discharge	Protection against short circuit
Lightweight	Protection against over charge	Protection against voltage error and overload
LCD screen	Protection against over temperature	Override mode
Microprocessor controlled	Protection against reverse polarity	Memory saver





GIGALITHIUM 12 V



GIGALITHIUM 12/24 V

TECHNICAL INFORMATION

MODEL	GIGALITHIUM 12 V	GIGALITHIUM 12/24 V
PART NUMBER	805600100	805600200
VOLTAGE (DC)	12 V	12/24 V
CRANKING AMPS (CA)	800	2000/1000
CABLE LENGTH	0,50 m	1,60 m
CABLE CROSS SECTION	10 mm ²	25 mm ²
AUTOMATIC CHARGER	1,3 A	4 A



PACKAGING INFORMATION

MODEL	GIGALITHIUM 12 V	GIGALITHIUM 12/24 V
NET WEIGHT	3 kg	6,25 kg
DIMENSIONS (L x W x h) mm	445 x 250 x 115	400 x 345 x 210

HOW TO CHOOSE

PART NUMBER	MODEL	VOLTAGE	12 V						24 V				
			<125*	150	175	250	300	500	100	250	500	1000	
			HP* = CHECK YOUR ENGINE HP - LEGEND: ■ NORMAL ■■ INTENSIVE										
805600100	GIGALITHIUM	12 V	■■	■■	■	■							
805600200	GIGALITHIUM	12/24 V	■■	■■	■■	■	■			■■	■■		



AGM JUMP STARTERS
PROPULSTATION



EV Series

Lithium
Jump starters

AGM
Jump starters

Electronic
chargers

Electromechanical
chargers

Battery testers

Worklights



PBI 1812 ⚡ 12 V 🔌 700 CA



+++

ON/OFF switch eliminates shorting of clamps and battery drain

300A in-line fuse protects against excessive current output

Reverse polarity alarm

Anti-spiking protection

12 V accessory outlet also used for memory saver mode

Lightweight

Colour LEDs indicate battery level and charging status

Compact and durable casing





AGM JUMP STARTER

PBI 200 ⚡ **12 V** 🔌 **900 CA**



+++

ON/OFF switch eliminates shorting of clamps and battery drain

Heavy-duty curved clamps and flexible 21 mm² cables

Digital display

Reverse polarity alarm and anti-spiking protection

12 V accessory outlet also used for memory saver mode

Soft handle and protective rubbers for extra robustness

2,1 A USB output ideal for charging different types of electronic devices

300 A in-line fuse protects against excessive current output





AGM JUMP STARTER

PBI 201 ⚡ 12/24 V ⚡ 1800/900 CA



+++

- ON/OFF switch eliminates shorting of clamps and battery drain

- Digital display

- 12 V accessory outlet also used for memory saver mode

- 2,1 A USB output ideal for charging different types of electronic devices

- Heavy-duty curved clamps and flexible 33 mm² cables

- Reverse polarity alarm and anti-spiking protection

- Soft handle and protective rubbers for extra robustness

- 500 A in-line fuse protects against excessive current output





PBI 2400HD ⚡ 12/24 V ⚙️ 2400/1200 CA



+++

Rotomolded and unbreakable housing

Heavy-duty curved clamps and double-insulated, ultra-flexible 50mm² cable

Retractable handle and puncture-proof wheels

Reverse polarity buzzer

12 V accessory outlet also used for memory saver mode

Optional: Auxiliary connector for auxiliary cables

Anderson connectors for voltage selection (12/24 V)

500 A fuse for short-circuit protection and 1 spare fuse



THE PBI RANGE



PBI 1812

PBI 200

PBI 201

PBI 2400 HD

TECHNICAL INFORMATION

MODEL	PBI 1812	PBI 200	PBI 201	PBI 2400 HD
PART NUMBER	94065001C	94065200C	94065201C	232008
VOLTAGE (DC)	12 V	12 V	12/24 V	12/24 V
CRANKING AMPS (CA)	700	900	1800/900	2400/1200
CABLE LENGTH	0,71 m	1,59 m	1,70 m	1,52 m
CABLE CROSS SECTION	21 mm ²	21 mm ²	33 mm ²	50 mm ²
AUTOMATIC CHARGER	0,7 A	2 A	2 A	4 A



PACKAGING INFORMATION

MODEL	PBI 1812	PBI 200	PBI 201	PBI 2400 HD
NET WEIGHT	9,25 kg	11,75 kg	20,8 kg	30,5 kg
DIMENSIONS (L x W x h) mm	330 x 170 x 363	360 x 150 x 440	425 x 230 x 455	475 x 290 x 550

HOW TO CHOOSE

PART NUMBER	MODEL	VOLTAGE	12 V							24 V					
			<125*	150	175	250	300	350	500	100	250	500	1000	1500	2000
HP* = CHECK YOUR ENGINE HP - LEGEND: ■ NORMAL ■■■ INTENSIVE															
94065001C	PBI 1812	12 V	■■	■	■										
94065200C	PBI 200	12 V	■■	■■	■	■									
94065201C	PBI 201	12/24 V	■■	■■	■■	■	■	■		■■	■■	■			
232008	PBI 2400 HD	12/24 V	■■	■■	■■	■■	■■	■■	■	■■	■■	■■	■	■	

Related Battery charger Part number:

PBI 1812

PBI 200

PBI 201

PBI 2400 HD

EU: 94065021

EU: 2299003058CZ

EU: 2299003058CZ

EU: 865124-A

UK: 94065022

UK: 2299003058GZ

UK: 2299003058GZ

UK: 865124-A + 976158

SOSBOOST

+++

BATTERIES

Our AGM batteries, with pure lead are extremely efficient thanks to their ability to deliver energy at high amperage almost instantaneously.

FUSE

The fuse protects the booster battery against excessive current output and short-circuits. It is very easy to replace.



CLAMPS

The clamps have been developed for convenience and ease of use with curved, wide-opening jaws. They are designed to optimize safety and performance with heavy-duty insulation and a copper bridge, which ensures easy transfer of current from both clamps.

STARTING CABLES

Starting cables feature double insulation, extreme flexibility, and an optimal length. They offer superior power transfer and withstand frequent use.

THE SOSBOOST RANGE



SOS 6 V
850 CA

SOS 12 V
440 CA

SOS 12 V
700 CA

SOS 12 V
800 CA

TECHNICAL INFORMATION

MODEL	6 V /850 CA	12 V /440 CA	12 V /700 CA	12 V /800 CA	12 V /1000 CA
PART NUMBER	860011	861044	861001	861002	861011
VOLTAGE (DC)	6 V	12 V	12 V	12 V	12 V
CRANKING AMPS (CA)	850	440	700	800	1000
CABLE LENGTH	1,50 m	0,6 m	1,3 m	1,3 m	1,3 m
CABLE CROSS SECTION	35 mm ²	25 mm ²	25 mm ²	25 mm ²	25 mm ²
AUTOMATIC CHARGER	0,8 A	1,3 A	1,3 A	2 A	2 A



PACKAGING INFORMATION

MODEL	6 V /850 CA	12 V /440 CA	12 V /700 CA	12 V /800 CA	12 V /1000 CA
NET WEIGHT	16,5 kg	6 kg	9,5 kg	9,5 kg	11 kg
DIMENSIONS (L x W x h) mm	450 x 130 x 390	360 x 130 x 240	375 x 110 x 320	375 x 110 x 320	375 x 110 x 320

HOW TO CHOOSE

PART NUMBER	MODEL	VOLTAGE	6 V							12 V		24V		
			100*	<125	150	175	250	300	350	500	100	250		
HP* = CHECK YOUR ENGINE HP - LEGEND: ■ NORMAL														
860011	6 V /850 CA	6 V	■ ■											
861044	12 V /440 CA	12 V		■	■									
861001	12 V /700 CA	12 V		■ ■	■	■								
861002	12 V /800 CA	12 V		■ ■	■ ■	■	■							
861011	12 V /1000 CA	12 V		■ ■	■ ■	■ ■	■	■						
860003	12 V /1200 CA	12 V		■ ■	■ ■	■ ■	■ ■	■	■					
761001	12/24 V 1400/700 CA	12/24 V		■ ■	■ ■	■ ■	■ ■	■	■			■ ■	■	
761006	12/24 V 1600/800 CA	12/24 V		■ ■	■ ■	■ ■	■ ■	■ ■	■			■ ■	■ ■	
231009	12/24 V 2000/1000 CA	12/24 V		■ ■	■ ■	■ ■	■ ■	■ ■	■ ■			■	■ ■	■ ■
760008	12/24 V-2400/1200 CA	12/24 V		■ ■	■ ■	■ ■	■ ■	■ ■	■ ■			■ ■	■ ■	■ ■
960000	12/24 V-3200/1600 CA	12/24 V		■ ■	■ ■	■ ■	■ ■	■ ■	■ ■			■ ■	■ ■	■ ■



SOS 12 V 1000 CA SOS 12 V 1200 CA SOS 12/24 V 1400/700 CA 12/24 V 1600/800 CA 12/24 V 2000-1000 CA 12/24 V 2400/1200 CA M 12/24 V 3200/1600 CA

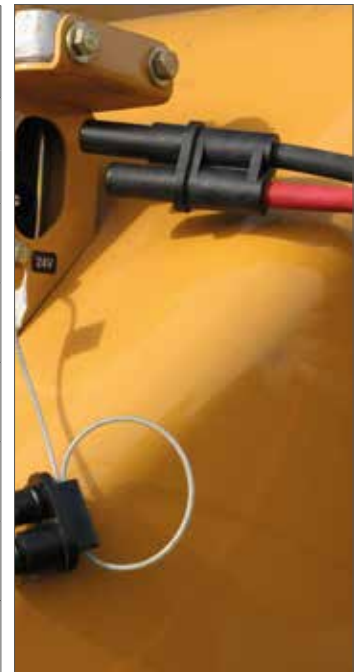
12 V /1200 CA	12/24 V 1400/700 CA	12/24 V 1600/800 CA	12/24 V 2000/1000 CA	12/24 V 2400/1200 CA	M 12/24 V 3200/1600 CA
860003	761001	761006	231009	760008	960000
12 V	12/24 V	12/24 V	12/24 V	12/24 V	12/24 V
1200	1400/700	1600/800	2000/1000	2400/1200	3200/1200
1,5 m	1,35 m	1,35 m	1,70 m	1,35 m	1,95 m
35 mm ²	35 mm ²	35 mm ²	50 mm ²	50 mm ²	70 mm ²
2 A	4 A	4 A	4 A	4 A	10 A

12 V /1200 CA	12/24 V 1400/700 CA	12/24 V 1600/800 CA	12/24 V 2000/1000 CA	12/24 V 2400/1200 CA	M 12/24 V 3200/1600 CA
14,5 kg	20,5 kg	20,5 kg	24,4 kg	24,8 kg	55 kg
450 x 130 x 390	530 x 160 x 480	530 x 160 x 480	410 x 225 X 400	530 x 160 x 480	470 x 340 x 970

24V

500	1000	1500	2000
■ INTENSIVE			
■			
■			
■ ■	■	■	
■ ■	■ ■	■	

OPTIONAL AUXILIARY CABLES	PART NUMBER FOR PORATBLE	PART NUMBER FOR MOBILE
Auxiliary connector built on the booster	860014 	860022
	860037	860035
	860016	860034
	860015	860024
	976001	976002
	976003	976004
	860032	860033



PROPULSTATION

+++

BATTERIES

Our AGM batteries, with pure lead are extremely efficient thanks to their ability to deliver energy at high amperage almost instantaneously.



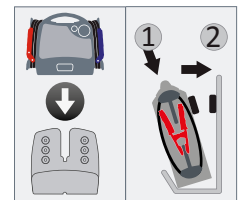
THE FUSE

The fuse is directly accessible from the outside of the booster. A spare fuse is available on the side of housing.

A blue LED indicates the correct functioning of the fuse. If it does not light up when pushing on the red button, the fuse is blown.

VOLTAGE DETECTION SYSTEM AND CORRECT CONNECTION SIGNAL

An LED system indicates the voltage to select on the booster. It reduces the risk of misuse while using a 12/24 V booster. The LEDs also indicate if the booster is correctly connected to the station.



THE CONNECTOR

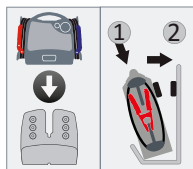
It revolutionizes and makes the storing of the booster in its station easier.

Thanks to the powerful magnets, the booster is guided at its place avoiding any risk of bad connection. The connector ensures an optimal recharge of the booster and avoids any movement while stored in the vehicle.



AGM JUMP STARTER

PROPULSTATION ⚡ 12 V 🔌 800 CA



+++

Robust shell case design 5 mm shatterproof polyethylene

Long and flexible cables with a double insulation and clamps fully insulated

The battery has exceptionally high capacity to accumulate and disperse high-ampere energy

Fully insulated clamps

The connector ensures an optimal recharge of the booster (5 magnetic poles)

The blue clamp is fitted with an LED light to make it easier and safer to use, even in the dark.

The 300 A fuse is directly accessible from the outside of the booster





PROPULSTATION ⚡ 12 V 🔌 1200 CA



+++

Robust shell case design 5 mm shatterproof polyethylene

Long and flexible cables with a double insulation

The battery has exceptionally high capacity to accumulate and disperse high-ampere energy

The connector ensures an optimal recharge of the booster (5 magnetic poles)

Fully insulated clamps

The 300 A fuse is directly accessible from the outside of the booster





AGM JUMP STARTER

PROPULSTATION ⚡ 12/24 V 🔌 2400/1200 CA



+++

Robust shell case design 5 mm shatterproof polyethylene

Long and flexible cables with a double insulation

The battery has exceptionally high capacity to accumulate and disperse high-amperage energy

Fully insulated clamps

LED system indicates the voltage to select on the booster

LED light ON if the booster is correctly connected to the station

The connector ensures an optimal recharge of the booster (5 magnetic poles)

The 500 A fuse is directly accessible from the outside of the booster





AGM JUMP STARTER

PROPULSTATION ⚡ 12 V ⚡ 6400 CA



+++

For heavy-duty start-ups

Large wheels for off-road situation

Robust shell case design 5 mm shatterproof polyethylene

Equipped with an auxiliary connector for optional cable connection

Long and flexible cables with a double insulation. Also equipped with fully insulated clamps

The connector ensures an optimal recharge of the booster (5 magnetic poles)

The battery has an exceptionally high capacity to accumulate and disperse high-amperage energy

The two 500 A fuses are directly accessible from the outside of the booster





AGM JUMP STARTER

PROPULSTATION ⚡ 12/24 V ⚙️ 3200/1600 CA



+++

For heavy-duty start-ups

Robust shell case design 5 mm shatterproof polyethylene

Long and flexible cables with a double insulation. Also equipped with fully insulated clamps

The battery has an exceptionally high capacity to accumulate and disperse high-amperage energy

Large wheels for off-road situation

Equipped with an auxiliary connector for optional cable connection

The connector ensures an optimal recharge of the booster (5 magnetic poles)

The two 500 A fuses are directly accessible from the outside of the booster





AGM JUMP STARTER

PROPULSTATION ⚡ 24 V ⚙️ 3200 CA



+++

For heavy-duty start-ups

Robust shell case design 5 mm shatterproof polyethylene

Long and flexible cables with a double insulation. Also equipped with fully insulated clamps

The battery has an exceptionally high capacity to accumulate and disperse high-amperage energy

Large wheels for off-road situation

Equipped with an auxiliary connector for optional cable connection

The connector ensures an optimal recharge of the booster (5 magnetic poles)

The two 500 A fuses are directly accessible from the outside of the booster



THE PROPULSTATION RANGE



PPS 12V
800 CA



PPS 12V
1200 CA



PPS 12/24V
2400/1200 CA



PPS 12V
6400 CA



PPS 12/24V
3200/1600 CA



PPS 24V
3200 CA

TECHNICAL INFORMATION

MODEL	PPS 12 V 800	PPS 12 V 1200	PPS 12/24 V 2400/1200	PPS 12 V 6400	PPS 12/24 V 3200/1600	PPS 24 V 3200
PART NUMBER	521002	520003	520008	560004	560000	560003
VOLTAGE (DC)	12 V	12 V	12/24 V	12 V	12/24 V	24 V
CRANKING AMPS (CA)	800 A	1200 A	2400/1200 A	6400 A	3200/1600 A	3200 A
CABLE LENGTH	1,55 m	1,55 m	1,35 m	2,10 m	2,10 m	2,10 m
CABLE CROSS SECTION	35 mm ²	50 mm ²	50 mm ²	70 mm ²	70 mm ²	70 mm ²



PACKAGING INFORMATION

MODEL	PPS 12 V 800	PPS 12 V 1200	PPS 12/24 V 2400/1200	PPS 12 V 6400	PPS 12/24 V 3200/1600	PPS 24 V 3200
NET WEIGHT	13,55 kg	17,50 kg	27,90 kg	75 kg	70 kg	70 kg
DIMENSIONS (L x W x h) mm	450 x 170 x 510	450 x 170 x 510	560 x 190 x 610	580 x 510 x 1100	580 x 510 x 1100	580 x 510 x 1100

HOW TO CHOOSE

PART NUMBER	MODEL	VOLTAGE	12 V							24 V						
			<125*	150	175	250	300	350	500	1000+	100	250	500	1000	1500	2000
			HP* = CHECK YOUR ENGINE HP - LEGEND: ■ NORMAL ■ INTENSIVE													
521002	PPS 800	12 V	■	■	■	■										
520003	PPS 1200	12 V	■	■	■	■	■	■								
520008	PPS 2400/1200	12/24 V	■	■	■	■	■	■	■	■	■	■	■	■	■	
560004	PPS 6400	12 V	■	■	■	■	■	■	■	■	■					
560000	PPS 3200/1600	12/24 V	■	■	■	■	■	■	■	■	■	■	■	■	■	
560003	PPS 3200	24V										■	■	■	■	■

RELATED PART NUMBER:

DOCKING STATION

- DC Vehicle station - with DC cable
- AC Workshop station - with charger AC/DC-230/12V

BATTERY CHARGER FOR DOCKING STATION AC

PPS 12V	PPS 12/24V	12V Mobile	12/24V Mobile	24V Mobile
AC12	AC1224	ACM	ACM	ACM
DC12	DC1224	DCM		
12V-2 A PN: 522502	12V-4 A PN: 522504	12V-10 A PN: 522510	12V-7 A PN: 522507	12V-10 A PN: 845120-A



PROPULSTATION ⚡ 72 V – Locomotive



+++

The highest voltage boosters on the market

Robust shell case design 5 mm shatterproof polyethylene

Long and flexible cables with a double insulation

Fully insulated clamps

The battery has exceptionally high capacity to accumulate and disperse high-ampere energy

Two 500 A fuses protect the batteries against short-circuits and overheating



 TECHNICAL INFORMATION

MODEL	PPS 72 V	PPS 110 V
PART NUMBER	560020	561023
VOLTAGE (DC)	72 V	110 V
QUANTITY OF BATTERIES	6 X 12 V	9 x 12 V
BATTERY PROTECTION FUSES	2 x 500 A	2 x 300 A
CABLE LENGTH	5 m	2 m
CABLE CROSS SECTION	70 mm ²	70 mm ²

 PACKAGING INFORMATION

MODEL	560020	561023
NET WEIGHT	90,2 kg	55 kg
DIMENSIONS (L x W x h) mm	500 x 540 x 1100	500 x 540 x 1100



ELECTRONIC CHARGER
SPI



EV Series

Lithium
Jump starters

AGM
Jump starters

Electronic
chargers

Electromechanical
chargers

Battery testers

Worklights



SPI1 ⚡ 6/12 V 🔌 1 A



+++

Battery charger and maintainer

AGM, Standard, Gel, Calcium, Start n' Stop

For 6 and 12 V batteries up to 32 Ah

Charging status LED

Microprocessor controlled

Protective bumpers and hook attachment

Protection against: Reverse polarity, spark proof and thermal runaway

Fully automatic and safety shut-off





SPI2 ⚡ 6/12 V ↗ 2 A



+++

Battery charger and maintainer

AGM, Standard, Gel, Calcium, Start n' Stop

For 6 and 12 V batteries up to 46 Ah

Charging status LED

Microprocessor controlled

Protective bumpers & hook attachment

Protection against: Reverse polarity, spark proof and thermal runaway

Fully automatic and safety shut-off





SPI3 ⚡ 12 V 🔌 3 A



+++

100% automatic battery charger and maintainer with safety shut-off

AGM, Standard, gel, calcium, Start n' Stop, Lithium (LiFePo4)

For 12 V batteries up to 58 Ah

Compatible lithium LiFePO4

Microprocessor controlled and multi-stage charging

Protective bumpers and hook attachment

Protection against: Reverse polarity, spark proof and thermal runaway

Scrolling digital display featuring English, German, French





SPI6 ⚡ 12 V 🔌 6 A



+++

100% automatic battery charger and maintainer with safety shut-off

AGM, Standard, gel, calcium, Start n' Stop

For 12 V batteries up to 130 Ah

Charging status LED

Microprocessor controlled and multi-stage charging

Protective bumpers and hook attachment

Protection against: Reverse polarity, spark proof and thermal runaway

Scrolling digital display featuring English, German, French, Italian, Spanish





SPI10 ⚡ 12 V 🔌 10 A



+++

100% automatic battery charger and maintainer with safety shut-off

AGM, Standard, gel, calcium, Start n' Stop

For 12 V batteries up to 200 Ah

Charging status LED

Microprocessor controlled and multi-stage charging

Scrolling digital display featuring, English, German, French, Italian, Spanish

Protection against: Reverse polarity, spark proof and thermal runaway

Protective bumpers and hook attachment





SPI15 ⚡ 12 V 🔌 15 A – Showroom mode



+++

100% automatic battery charger and maintainer with safety shut-off

AGM, Standard, gel, calcium, Start n' Stop

For 12 V batteries up to 230 Ah

Showroom mode: Supply of constant current

Microprocessor controlled and multi-stage charging

Protective bumpers and hook attachment

Protection against: Reverse polarity, spark proof and thermal runaway

Scrolling digital display featuring, English, German, French, Italian, Spanish





SPI1224 ⚡ 12/24 V 🔌 15/10 A



+++

For 12 V or 24V batteries up to 230 Ah

Microprocessor controlled and multi-stage charging

Protection against: Reverse polarity, spark proof and thermal runaway. Safety shut-off and ventilation system

AGM, gel, calcium, Start n' Stop

Charging status Led

Hook attachment and protective bumpers

Scrolling digital display featuring English, German, French

Recovery mode for sulphated batteries for 12 and 24V



THE SPI RANGE



TECHNICAL INFORMATION

MODEL	SPI1	SPI2	SPI3	SPI6	SPI10	SPI15	SPI1224
PART NUMBER	940651045*	94065049*	94065050*	94065091*	94065092*	94065189*	94065194*
	* Add letter plug type PLUG EU = C PLUG UK = G PLUG AU = I						
OUTPUT VOLTAGE (DC)	6/12 V	6/12 V	12 V	12 V	12 V	12 V	12/24 V
NOMINAL AC VOLTAGE	230V AC - 50 Hz						
MAX. CHARGING CURRENT	1 A	2 A	3 A	6 A	10 A	15 A	15/10 A
IP RATING	IP54	IP54	IP54	IP20	IP20	IP20	IP20
BATTERY TYPE	Lead-Acid	Lead-Acid	Lead-Acid & Lithium	Lead-Acid	Lead-Acid	Lead-Acid	Lead-Acid
OUTPUT CABLE (CM) (FROM ENCLOSURE TO CLAMP END)	201	185	185	218	218	185	185
WORKING TEMPERATURE	-20° to +50° C						



PACKAGING INFORMATION

MODEL	SPI1	SPI2	SPI3	SPI6	SPI10	SPI15	SPI1224
NET WEIGHT	0,6 kg	1 kg	1 kg	1,4 kg	1,4 kg	1,7 kg	1,7 kg
DIMENSIONS (L x W x h) mm	195 x 148 x 65	189 x 210 x 77	189 x 210 x 77	208 x 83 x 239	208 x 83 x 239	228 x 102 x 244	228 x 102 x 244

HOW TO CHOOSE

PART NUMBER	MODEL	VOLTAGE	6 V	12 V							24 V			
			12 Ah	32 Ah	46 Ah	58 Ah	130 Ah	165 Ah	200 Ah	230 Ah	230 Ah	360 Ah	550 Ah	
94065104	SPI1	6/12 V	■	■										
94065049	SPI2	6/12 V	■	■	■									
94065050	SPI3	12 V		■	■	■								
94065091	SPI6	12 V		■	■	■	■							
94065092	SPI10	12 V		■	■	■	■	■	■					
94065189	SPI15	12 V		■	■	■	■	■	■	■				
94065194	SPI1224	12/24 V		■	■	■	■	■	■	■	■			



SPI16 PRO ⚡ 12/24 V 🔌 16/8 A



+++

Showroom mode

GEL - WET - AGM - VRLA - MF - DRY - Start'n Stop

Compatible lithium LiFePO4

Power supply - Memory saver

ADAS supply

Recovery mode





SPI25 PRO ⚡ 12/24 V 🔌 25/12,5 A



+++

Showroom mode

Power supply - Memory saver

GEL - WET - AGM - VRLA - MF - DRY - Start'n Stop

ADAS supply

Compatible lithium LiFePO4

Recovery mode





SPI16 PRO

SPI25 PRO

TECHNICAL INFORMATION

MODEL	SPI16 PRO	SPI25 PRO
PART NUMBER EUROPE	809030	809040
PART NUMBER AUSTRALIA	94065316I	94065325I
VOLTAGE (DC)	12 V - 24 V	12 V - 24 V
NOMINAL AC VOLTAGE	230V AC - 50 Hz	230V AC - 50 Hz
INPUT POWER	280 W	450 W
RATED CURRENT (MIN-MAX)	4 - 8 -16 A	5 - 12,5 - 25 A
CHARGING AND TESTING STAGES	9	9
CHARGE CAPACITY	5 Ah - 360 Ah	5 Ah - 550 Ah
MAINTENANCE CAPACITY	5 Ah - 550 Ah	5 Ah - 800 Ah
SHOWROOM FUNCTION	13,8 V - 13 A	13,8 V - 21 A
IP RATING	IP20	IP20
WORKING TEMPERATURE	-20° to +50° C	-20° to +50° C



PACKAGING INFORMATION

MODEL	SPI16 PRO	SPI25 PRO
NET WEIGHT	2 kg	2,50 kg
DIMENSIONS (L x W x h) mm	260 x 130 x 75	260 x 130 x 75

HOW TO CHOOSE

PART NUMBER	MODEL	VOLTAGE	6 V	12 V					24 V				
			12 Ah	32 Ah	46 Ah	58 Ah	130 Ah	165 Ah	200 Ah	230 Ah	230 Ah	360 Ah	550 Ah
809030	SPI 26 PRO	12/24 V		■	■	■	■	■	■	■	■	■	
809040	SPI 25 PRO	12/24 V		■	■	■	■	■	■	■	■	■	■



ELECTRONIC CHARGERS

2 BANK ⚡ 12 V ↗ 15 A



+++

Automatically detects connected batteries

AGM, Standard, Gel, Calcium, Start n' Stop

Automatic recovery

Protection against reverse polarity

Charge batteries sequentially

Microprocessor controlled



 TECHNICAL INFORMATION

MODEL	SC348
PART NUMBER	94065348C
VOLTAGE (DC)	12 V
NOMINAL AC VOLTAGE	230V AC - 50 Hz
MAX. CHARGING CURRENT	15 A
IP RATING	IP 65
BATTERY TYPE	Compatible with standard, AGM, gel, and deep-cycle batteries
OUTPUT CABLE (CM) (FROM ENCLOSURE TO CLAMP END)	180 cm
WORKING TEMPERATURE	-20° to +50° C





INC 100 ⚡ 12V 🔌 70A



+++

Fully automatic microprocessor-controlled charger

Lead-acid, calcium, AGM, Start 'n Stop, GEL Cell battery types

Built-in digital voltmeter/tester – shows battery voltage and charging percentage

5 – Meter cables equipped with heavy-duty clamps and Anderson connector (included)

Recovery mode for deeply discharged and sulphated batteries included

Short-circuit and thermal runaway protection

Adjustable mounting brackets for permanent installation to most vehicle lifts

Dual temperature controlled cooling fans

Heavy-duty clamps with replaceable jaws. Durable aluminium case and large carry handle

Supply 100 A peak for 3 min





INC-100

TECHNICAL INFORMATION

MODEL	INC-100
PART NUMBER EU	94065033
	* Add letter plug type PLUG EU = C PLUG UK = G PLUG AU = I
BATTERY CHARGER	
VARIABLE CHARGE RATES	4 A / 20 A / 70 A
INPUT VOLTAGE	220-240 V, 50-60 Hz
INPUT POWER	1800 W
BATTERY CAPACITY CHARGE	5-1000 Ah
MANUAL MODE WITH DIGITAL TIMER	✓
BATTERY TYPE	Lead-acid, calcium, AGM, START & STOP, GEL Cell battery types
RECOVERY / DESULFATION MODE INCLUDED	✓
POWER SUPPLY	
CONTINUOUS OUTPUT CURRENT	70 A - 100 A for 3 minutes
CONSTANT VOLTAGE OUTPUT	Selectable from 13.0 V up to 14.8 V



PACKAGING INFORMATION

MODEL	INC-100
NET WEIGHT	11,30 kg
DIMENSIONS (L x W x h) mm	460 x 445 x 150

RELATED PART NUMBER INC-100:

POWER CORD	5M - 34 mm ² (standard)	3M - 21 mm ²
EU: 90026395	Grey connector & clamps	Grey connector & clamps
UK: 90026403	EU & UK: 2299002862	EU & UK: 2299003103



ELECTRONIC CHARGERS

FLASHMEM 60 ⚡ 12 V 🔌 60 A



+++

Microprocessor-controlled

Reprogramming, flashing and car diagnostics

Selectable output voltage up to 14.8V

Protection against reverse polarity and short circuit

Protection against voltage error and overload

Supply permanent, stabilized high Amp current

Compact size

WET, AGM, LITHIUM LiFePO₄





ELECTRONIC CHARGERS

FLASHMEM 100 ⚡ 12 V 🔌 100 A



+++

Microprocessor-controlled

Reprogramming, flashing and car diagnostics

Selectable output voltage up to 14.8V

Protection against reverse polarity and short circuit

Protection against voltage error and overload

Supply permanent, stabilized high Amp current

Compact size

WET, AGM, LITHIUM LiFePO4





ELECTRONIC CHARGERS

FLASHMEM 120 ⚡ 12 V 🔌 120 A



+++

Microprocessor-controlled

Reprogramming, flashing and car diagnostics, desulphation recovery

Selectable output voltage up to 14.8V

Protection against reverse polarity and short circuit

Protection against voltage error and overload

Supply permanent, stabilized high Amp current

Compact size

WET, AGM, LITHIUM LiFePO4



THE FLASHMEM RANGE



FLASHMEM 60



FLASHMEM 100



FLASHMEM 120

TECHNICAL INFORMATION

MODEL	FLASHMEM 60	FLASHMEM 100	FLASHMEM 120
PART NUMBER	805650300	805650400	805650500
INPUT VOLTAGE	110-240 V, 50-60 Hz		
INPUT POWER	1100 W	1700 W	2100 W
OUTPUT VOLTAGE	12 V - 14,8 V	12 V - 14,8 V	12 V - 14,8 V
CHARGE CURRENT	5-60 A	10-100 A	10-120 A
CHARGE CAPACITY	5-600 Ah	10-1000 Ah	10-1200 Ah
MAINTENANCE CAPACITY	5-1800 Ah	10-3000 Ah	10-3600 Ah
CABLE LENGTH	2,50 m	2,50 m	2,50 m
	6,00 m (805650301)	6,00 m (805650401)	6,00 m (805650501)



PACKAGING INFORMATION

MODEL	FLASHMEM 60	FLASHMEM 100	FLASHMEM 120
NET WEIGHT	6,40 kg	8,20 kg	11,80 kg
DIMENSIONS (L x W x h) mm	400 x 340 x 215	440 x 375 x 240	440 x 375 x 240



MODEL	TROLLEY BM 200
PART NUMBER	895900100
NET WEIGHT	25,50 kg
DIMENSIONS (L x W x h) mm	540 x 560 x 1120



EV Series

Lithium
Jump starters

AGM
Jump starters

Electronic
chargers

Electromechanical
chargers

Battery testers

Worklights



ELECTROMECHANICAL CHARGERS

SCI90 ⚡ 6/12V 🔌 3 / 5 / 20 A



+++

Fully automatic microprocessor-controlled charger

Auto voltage detection (6/12 V)

150A boost mode to help start dead batteries

Deep desulfation mode

Built-in digital voltmeter/tester – shows battery voltage & charging percentage

Float mode monitoring maintains optimum battery charge

Patented thermal runaway protection, monitors charge process to prevent battery from over heating

Reverse hook-up protection
Helps protect battery and charger from damage

Protection against reverse polarity



i TECHNICAL INFORMATION

MODEL	SCI90
PART NUMBER	94065007C
VOLTAGE (DC)	6/ 12 V
INPUT VOLTAGE	230 V AC, 50-60 Hz
INPUT POWER	1400 W
VARIABLE CHARGE RATES	3 A / 5 A / 20 A
MAX. OUTPUT CURRENT (During 3 sec)	90 A - 150 A
ENGINE START MODE (EMERGENCY STARTING)	√
CABLE LENGTH	1,75 m
BATTERY TYPES	AGM, GEL , CALCIUM and sulfated batteries



📦 PACKAGING INFORMATION

MODEL	SCI90
NET WEIGHT	5,82 kg
DIMENSIONS (L x W x h) mm	232 x 258 x 171

RELATED PART NUMBER:

FOOT FOR RUBBER BASE

4999000171



TITAN 60 ⚡ 12/24 V ↻ 40 A



+++

3 programmed charge cycles and a manual cycle

Sulfate deposit removal and Recovery

Built-in electronic protection

10 phases of charge cycle

Constant analysis

Ideal for Start n' Stop and Spiral batteries

Potentiometer for regulating the charge current

Supply Function

Specific charge processes WET - SPIRAL/GEL-AGM

Electronic control system

Dual voltage 12/24 V





TITAN 75 ⚡ 12/24 V 🔌 50 A



+++

3 programmed charge cycles and a manual cycle

Sulfate deposit removal and Recovery

Built-in electronic protection

10 phases of charge cycle

Constant analysis

Ideal for Start n' Stop and Spiral batteries

Potentiometer for regulating the charge current

Supply Function

Specific charge processes WET - SPIRAL/GEL-AGM

Electronic control system

Dual voltage 12/24 V





ELECTROMECHANICAL CHARGERS

TITAN 100 ⚡ 12/24 V 🔌 70 A



+++

3 programmed charge cycles and a manual cycle

10 phases of charge cycle

Potentiometer for regulating the charge current

Electronic control system

Sulfate deposit removal and Recovery

Constant analysis

Supply Function

Dual voltage 12/24 V

Built-in electronic protection

Ideal for Start n' Stop and Spiral batteries

Specific charge processes WET - SPIRAL/GEL-AGM

Remote control for start engine mode



THE TITAN RANGE



TITAN 60

TITAN 75

TITAN 100

TECHNICAL INFORMATION

MODEL	TITAN 60		TITAN 75		TITAN 100	
PART NUMBER	815701300		815701400		815701500	
	* Add letter plug type PLUG EU = C PLUG UK = G PLUG AU = I					
INPUT VOLTAGE	230 V AC, 50-60 Hz					
INPUT POWER	START	60 - 8 kW	START	75 - 10 kW	START	100 - 14 kW
	CHARGE	60 - 1400 W	CHARGE	75 - 1800 W	CHARGE	100 - 2400 W
OUTPUT VOLTAGE (DC)	12/24 V		12/24 V		12/24 V	
CHARGE CURRENT	1A ▶ 40 A (60 A - Eff.)		1A ▶ 50 A (75 A - Eff.)		1A ▶ 70 A (100 A - Eff.)	
STARTING CURRENT	350 PA - 250 CA		400 PA - 300 CA		650 PA - 450 CA	
COMPATIBLE BATTERIES	PB - WET - GEL - AGM SPIRAL - MF - VRLA		PB - WET - GEL - AGM SPIRAL - MF - VRLA		PB - WET - GEL - AGM SPIRAL - MF - VRLA	
RECHARGE CAPACITY	4-450 Ah		4-550 Ah		4-700 Ah	

PACKAGING INFORMATION

MODEL	TITAN 60	TITAN 75	TITAN 100
NET WEIGHT	18 kg	22 kg	28 kg
DIMENSIONS (L x W x h) mm	600 x 275 x 305	760 x 300 x 370	760 x 300 x 370



MEMORY SAVER
OBDL



EV Series

Lithium
Jump starters

AGM
Jump starters

Electronic
chargers

Electromechanical
chargers

Battery testers

Worklights



BATTERY TESTER

BT175

+++

Digital Tester for 12 V batteries and starting/charging systems

For Lead-Acid, VRLA, AGM and Gel Batteries

Digital display shows voltage and CCA rating



TECHNICAL INFORMATION

MODEL	BT175
PART NUMBER	940261128
VOLTAGE	7-15 V
OPERATING RANGE	100-1200CCA (SAE)



PACKAGING INFORMATION

MODEL	BT175
NET WEIGHT	0,25 KG
DIMENSIONS (L x W x h) mm	70 X 120 X 15



BATTERY TESTERS

ACCUTEST ⚡ 12 V



+++

Battery tester function 12 V

Starter tester function 12 V

Blow molded plastic case

Backlit LCD graphic display

Shockproof casing

Intuitive multi-language menu

USB port and cable

Pb WET - EFB - AGM - GEL - VRLA - Start 'n Stop



STANDARD & SMART
ALTERNATOR



BATTERY TESTERS

ACCUTEST+ ⚡ 12/24 V



+++

Battery tester function 12 V

Smart alternator test 12/24 V

Vehicle mass voltage drop test

Large backlit display

Rugged and shockproof casing and carry case

USB port

Printer equipped

Pb WET - GEL - AGM - MF - VRLA - SLI
Start 'n Stop





ACCUTEST 12 V ACCUTEST+ 12/24 V

TECHNICAL INFORMATION

MODEL	ACCUTEST 12 V	ACCUTEST 12/24 V
PART NUMBER	825900200	825900300
OPERATING RANGE	40 ~ 2000 CCA automotive	40 ~ 600 CCA moto / 100 ~ 2000 CCA automotive
STANDARDS	CCA/ SAE, DIN, EN1, EN2, CA/MA, IEC, JIS	CCA,SAE, DIN,EN, IEC - JIS > Yuasa Battery
BATTERY RATING	Pb WET - GEL - AGM - MF - VRLA - SLI	Pb WET - GEL - AGM - MF - VRLA - SLI
OPERATING VOLTAGE	9 - 15 V	9 - 36 V
DISPLAY	Backlit LCD	Large backlit LCD
HEAT PRINTER	No	Included
CABLE LENGTH	1,70 m	1,80 m
LANGUAGES	Pictogram display	English, Italian, French, German, Spanish, Polish,Romanian, Dutch, Swedish, Finnish
SUPPLY RANGE	9 - 15V DC	9 - 36 V DC
PACKAGING	Blow molded plastic case	Rugged and shockproof casing



PACKAGING INFORMATION

MODEL	ACCUTEST 12 V	ACCUTEST 12/24 V
NET WEIGHT	1,4 kg	3 kg
DIMENSIONS (L x W x h) mm	270 x 220 x 70	440 x 325 x 110



MEMORY SAVER

OBD-L Memory saver detector cable



+++

Fully automatic

Works on all vehicles equipped with a standard on-board data (OBDII) Port

Standard fuse protected auxiliary input plug

LED indication

Easy to follow 3-step instructions

Detects automatically if the vehicle's electronics will allow this device to save on-board data



TECHNICAL INFORMATION

MODEL	OBD-L
PART NUMBER	940261086
CABLE LENGTH - CASING / CIGARETTE LIGHTER (MM)	960
CABLE LENGTH - CASING / OBDII PLUG (MM)	925
DIMENSIONS (L X W X H / MM)	140 x 70 x 40



PACKAGING INFORMATION

MODEL	OBD-L
NET WEIGHT	0,35 kg
DIMENSIONS (L x W x h) mm	180 x 130 x 75



Save the settings of your vehicle while disconnecting and replacing the battery.

Attach the OBD-L between a portable Schumacher power unit and the vehicle OBDII diagnostic port. This allows to maintain power to the vehicle on-board devices when the vehicle battery is disconnected for service or replacement. Fully automatic and user-friendly. Works on all vehicles equipped with a standard OBDII port. Colour LED indicate if the connection on both sides is OK, and if it is safe to disconnect the battery.

WORKLIGHT
SL 184



WORKLIGHT
SL 176

Worklights

Battery testers

Electromechanical
chargers

Electronic
chargers

AGM
Jump starters

Lithium
Jump starters

EV Series





WORKLIGHTS

SL 184 – SLIM 360°



+++

Li-ion 2600 mAh battery

600 lumens – 90 min Life

16 Superbright SMD LED

Soft touch rubberized casing

Adjustable rotary switch – up to 600 lumens

Unique 360° swivel and tilt function

Magnetic base

Retractable hook





WORKLIGHTS

SL 360 - 400 LUMENS



+++

Li-ion 2600 mAh battery

600 lumens - 120 min Life

16 Superbright SMD LED

Soft touch rubberized casing

Adjustable rotary switch - up to 600 lumens

Unique 360° swivel and tilt function

Magnetic base

Retractable hook





WORKLIGHTS

SL 886U - FLOOD LIGHT



+++

Li-ion 3.7 V 2600 mAh Battery

Magnetic Base

600 lumens - 300 min Life

Adjustable swivel hook

Aluminum and ABS housing

Supplied with Micro-USB cable





WORKLIGHTS

SL 176 - UNDERHOOD WORKLIGHT



+++

Li-ion 2600 mAh battery

Die-cast aluminium housing with durable ABS

400 lumens low - 1000 lumens high

COB covered with polycarbonate lens to protect user's eyes. 40° angle adjustable lamp heads

3 super-bright 5W COB LED

LED Power indicator for battery charge level

Foam covered handles won't mark the paint (adjustable length 119 to 175 cm)

60° beam angle





SL 184

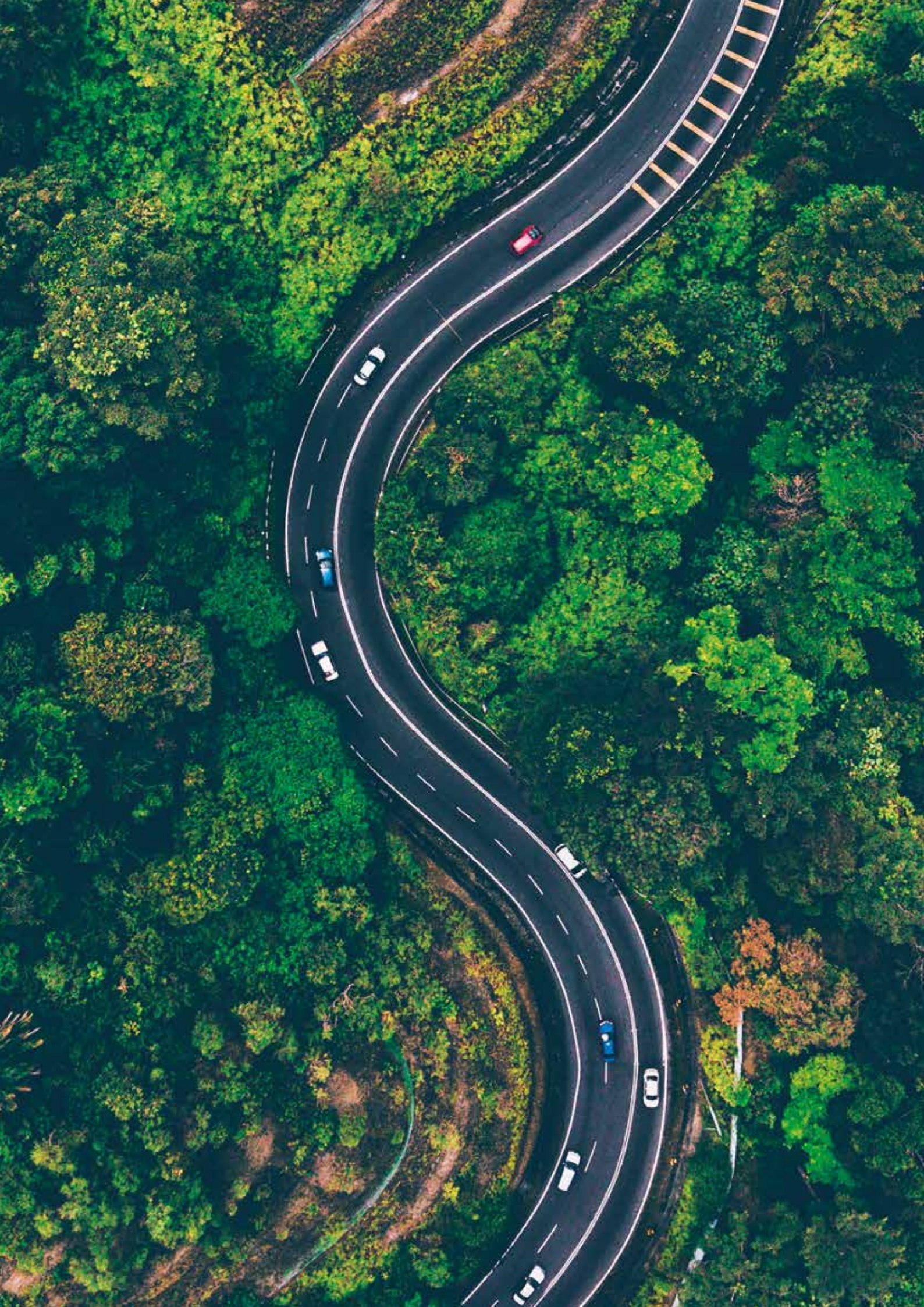
SL 360

SL 886 U

SL 176

i TECHNICAL INFORMATION

MODEL	SL 184	SL 360	SL 886U	SL 176
PART NUMBER	140010RU	140003RU	94500886	140008
LUMENS	600	200/400	300/600	400/1000
OPERATING TIME HIGH/LOW/TORCH	90 Min	360 Min / 180 Min	180 Min / 90 Min	/
TECHNOLOGY	16 SMD	10 SMD	/	15 W COB
LITHIUM - ION BATTERY CAPACITY	2600 mAh	2200 mAh	2600 mAh	2600 mAh
360 °	√	√	√	/
SOFT-TOUCH	√	√	√	/
MAGNET	1	3	1	/
HOOK ATTACHMENT	1	2	1	Foam covered handles
IP RATING	IP 54	IP 54	/	/





Keep it rolling.™

www.schumachereurope.com

Schumacher Europe

Rue de la Baronnerie, 3
4920 Harzé, Belgium

Info-be@schumacherelectric.com

www.schumachereurope.com

+32 4 388 20 17



@schumacherboosters