



**REACHING
FOR NEW
HEIGHTS!**



EDITION '20 // GEBV // GAITHERTOOL.COM

GAITHER'S BEAD BAZOOKA®

UNIQUE RAPID AIR RELEASE TECHNOLOGY



Time is money! Especially in the tire industry! It's efficient work that brings the profit. With our Bead Bazooka® the frustration of hard to inflate tires will no longer exist.

Gaither's patented Bead Bazooka® combines unique rapid air release technology and easy-to-handle tank for seating tubeless tire beads. Simply fill the tank, aim the redesigned double barrel and FIRE! The instantaneous blast of air from the 6L, 9L or 12L tank will work on agricultural, truck (including super singles), passenger, motorcycle and most other tires. Patented design, RAR system (fully automatic - just press and fire!). "Slotted" double barrel directs the air for best overall lift. Fully TÜV and CE certified. Smaller tank for easier handling in shop and service truck. Lightweight design reduces stress on technician. Goggles and earplugs included.

CLASSIC & BEYOND

GAITHER

101-BEAD SEATER

Economic inflation tool with a 20L tank. Valve opens manually. Safety pack included.



SPECIFICATIONS

- Internal proprietary coating protects tank against rust
- CE certified tank
- Weight: 13kg
- **3-Year warranty**

GAITHER

GB-5MA

The BEAD BOOSTER GB-5MA is the latest bead seater from Gaither. It comes equipped with our patented MIS valve.



WATCH VIDEO



SPECIFICATIONS

- For commercial light vehicles, truck (wide base) and a variety of AG tires
- The tank is CE/ASME certified
- New MIS valve with a 2" opening
- Internal proprietary coating protects tank against rust
- **3-Year warranty**

GAITHER'S BEAD BAZOOKA®

BB06L

- For motorcycle, car, commercial light vehicles
- Internal proprietary coating protects tank against rust
- Volume: 6l and 10 bar pressure
- Weight: 5,5kg



Gaither.
PROFESSIONAL EQUIPMENT

GAITHER'S BEAD BAZOOKA®

BB09L

- For car, commercial light vehicles, truck (wide base)
- Internal proprietary coating protects tank against rust
- Volume: 9l and 10 bar pressure
- Weight: 6,5kg



GAITHER'S BEAD BAZOOKA®

BB12L

- For commercial light vehicles, truck (wide base) and a variety of AG tires
- Internal proprietary coating protects tank against rust
- Volume: 12l and 10 bar pressure
- Weight: 9,5kg



GAITHER BBH-01

Bazooka storage station.



GAITHER'S BEAD BAZOOKA®

GB-38L

- For truck and agricultural tires
- CE certified tank
- Internal proprietary coating protects tank against rust
- 2" Jet Assisted Barrel
- Alloy tank
- Volume 38l and 10 bar pressure
- Weight: 8,5kg



WATCH DEMO

**TIPS &
TRICKS**



GAITHER GT SERIES

PROVEN QUALITY

Heavy duty, air service jacks. Ideal for mobile service and workshop duty. **3-Year limited warranty.**

All our jacks include multiple extensions to reach the ideal height.

Experience the difference today!



GAITHER GT 6033

Our new 60T 3-stage jack comes with following features:

- Controlled descent
- Hard chrome plated internal and external cylinders
- XTP seals
- Safety valve
- Self-return switch for maximum safety

SPECIFICATIONS

- Low profile, high capacity
- Min. height: 150mm
- Max. height: 447mm
- Length: 875mm
- Width: 295mm
- Height: 1380mm
- 3 stage, 60/40/20T
- **3-Year limited warranty**

NEW!

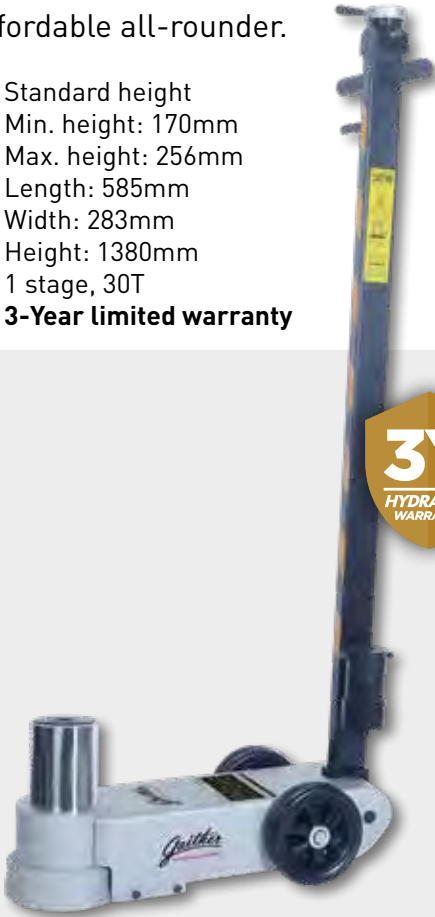


Gaither
PROFESSIONAL EQUIPMENT

GAITHER GT 3031

Affordable all-rounder.

- Standard height
- Min. height: 170mm
- Max. height: 256mm
- Length: 585mm
- Width: 283mm
- Height: 1380mm
- 1 stage, 30T
- **3-Year limited warranty**



GAITHER GT 3532 AG

Gaither
PROFESSIONAL EQUIPMENT

Ideal for agricultural and construction vehicles.

- Min. height: 360mm
- Max. height: 772mm
- Length: 840mm
- Width: 282mm
- Height: 1380mm
- 1 stage, 35T
- **3-Year limited warranty**



GAITHER GT 4033

Our new ultra low 3-stage jack at a price that no one beats!

- Short body, low profile
- Min. height: 125mm
- Max. height: 407mm
- Length: 527mm
- Width: 268mm
- Height: 1300mm
- 3 stage, 40/22/10T
- **3-Year limited warranty**



GAITHER GT 4533

Preferred choice of tire service organizations throughout the world.

- Low profile
- Min. height: 150mm
- Max. height: 399mm
- Length: 660mm
- Width: 290mm
- Height: 1380mm
- 2 stage, 45/20T
- **3-Year limited warranty**



GAITHER GT 4534

Ultra slim design for buses and low clearance vehicles.

- Low profile
- Min. height: 130mm
- Max. height: 404mm
- Length: 835mm
- Width: 295mm
- Height: 1344mm
- 3 stage, 45/20/10T
- **3-Year limited warranty**



GT 3.0

HIGH CAPACITY, LOW PROFILE DESIGN WITH DUAL PUMP TECHNOLOGY.

High capacity, low profile design combined with DUAL PUMP technology. The nylon wheels minimize potential (showroom) floor damage. The foot pedal ensures a fast approach of the lifting point. A rubber grip and saddle are standard features. The built-in pressure relief valve prevents overloading. This low profile jack comes with heat-treated chromed pump pistons and chromed main ram.



SPECIFICATIONS

- 3T
- Low profile
- Fast reach foot pedal
- Nylon wheels
- Controlled descent
- Hold to run control
- Min. Height: 95mm
- Max. Height: 515mm
- Length: 812mm
- Width: 367mm
- Height: 1200mm
- Weight: 40,5 kg
- **3-Year warranty**



Gaither
PROFESSIONAL EQUIPMENT

GAITHER

GT10-6

CLICK'N'GO VALVE TOOL

- Set of 4
- Anchoring system
- Safe and fast (de)installation



GAITHER

12894

Same as 12894C but without coating.

GAITHER

12894C

Heavy bead keeper used to assist in the tire-mounting process. Rubber coated to protect from scratching rims.



GAITHER

12894CW

Wide claw bead keeper. Rubber coated to protect from scratching rims.



GAITHER

GTS-01

Tire Spreader designed to spread tire beads quickly to make tire repairs easier than ever!



GAITHER

GT10-3

Third hand bead keeper spring type.



GAITHER

GTM

Tire Mop used for applying lubricant to the tire bead and wheel flange.



GAITHER

12965

Premium White tire mounting paste 5kg.

made in Germany

GAITHER

12966

Premium Transparent tire mounting paste 5kg.

made in Germany

GAITHER

12967

Premium Transparent tire mounting paste 3kg.

made in Germany

GAITHER

12960

Premium Black tire mounting paste 5kg.

made in Germany



**BEST
SELLER**

GAITHER

12904

Gaither's Super Slick'em. The original. Unmatched in terms of effectiveness for mounting and demounting. A non-water based lubricant that will not cause rust and will not freeze.



12880E - BEAD SAVER

THE FAMOUS, ALL-IN-ONE TOOL SOLUTION.

The famous, all-in-one tool solution for tire mounting and demounting without damaging the tire bead. Cost friendly, easy to learn and does not require a lot of physical strength because it works on principals of leverage.

Over 250,000 satisfied users worldwide including service departments, defense departments, individual owner/operators, and general workshops. Also recommended by Michelin training centers. Suitable for tubeless truck tires from 17,5" up to 24,5" including super singles and low profile tires.

SPECIFICATIONS

Tire size: 17,5"-24,5"
Weight: 35 Kg

WATCH VIDEO



TOOL4LIFE!

COPIED OFTEN
NEVER EQUALLED



GAITHER

12772

MANUAL TIRE CHANGER

The next generation 12772 manual tire changer offers a heavy duty design and all new clamping system. Equipped with a variety of accessories, this standalone, portable device can be operated easily without the need for electrical- or pneumatic power.

Due to its robust framework and tire mounting- and demounting lever it becomes possible to change a large variety of tires which sets it apart from alternatives in the market.

The included adaptor ensures precise clamping and centering of wheels from 4"-21".

The ideal solution while servicing motor cycle, scooter, ATV, car, racing and 4x4 tires.

SPECIFICATIONS

Tire size: 4"-21"
Weight: 35 Kg





GAITHER GTO-01TB

Patented tool designed to make it easier and safer to install wheels back on their studs.

GAITHER GTABB-01

Gaither's patented pneumatic bead breaker is recommended for agricultural tires and most of the common truck tires as long as one properly lubricates the bead area prior to breaking.

This light weight tool with air regulator is extremely fast and easy to use without risking bead damage. The tool comes with a blow case and requires a minimum of 6 Bars completed with 115 L/M.



GAITHER 12045

Mount/demount bar



GAITHER 12027B

Heavy Duty slide hammer bead breaker 13kg.



GAITHER BVA-3

Adaptor bridge for BV-04 allows the user to break the bead past the hump on the any side of the Wheel.



GAITHER BV-04

Gaither's Bead Vice offers a simple but efficient way to break tire beads loose on hump (EVA) wheels when used in combination with Super Slick'em.



GAITHER GTGD50/51

- The toughest digital tire pressure gauge and Inflator on the market
- With its durable design & rubber boot, this inflator is not only comfortable to use, but also strong enough to withstand the punishment of any shop
- Chuck style: Dual angle (GTD50) / Single Clip-on (GTGD51)
- Hose length: 500 mm (GTGD50) / 1800 mm (GTGD51)

GAITHER J-1 TOOL

2 Pc ergonomic J1 system (17,5" to 24,5" up to 315 width).



GAITHER

GT-20MS [COMING SOON]

Jacks have long been a source of workplace accidents and injuries. The threat of damage and bodily harm from falling multi-ton vehicles is all too real, as any experienced tech knows. The world needs a reliable and more safe jack.

To combat this common problem, we have developed a jack that is far more stable and reliable than the competition. The Moore-Safe Jack is designed to securely cradle vehicle components, dramatically reducing the chance of slippage due to misplacement or a shifting load.

The Moore Safe's patented design features two interchangeable mounting heads. A "Y" Head for round and square surfaces as well as a "Round" Head that can cradle u-bolts and provide a wide footprint for flat surfaces. Both were engineered to maintain the center of gravity even in the event of a shifting load, guaranteeing maximum safety even in the least ideal circumstances.

MOORE'SAFE

GT-20MS INCLUDES

- Comes with 2 interchangeable adaptor heads
- Maintains the center of gravity while lifting
- Dramatically reduces the chance of vehicle drops
- Makes jack positioning easy

WATCH VIDEO





MORE INFO?
Check out our Gaither Beads App

THE BEADS

NOTHING BEATS OUR BEADS.

The ultimate tire and wheel assembly balancing solution.

It's a premium, internal balancing compound that provides an accurate, continual balance within the tire/wheel assembly for the life of the tread. Its ability to quickly adjust to the changing imbalance conditions provides the correct and perfect method of being able to balance all wheel assemblies resulting in fuel, labor & tire savings.

Benefits

- Trouble Free Balance
- Increased Tire Life
- Improved Fuel Economy
- Reduce Vibration
- Reduce Maintenance
- Environmentally Friendly

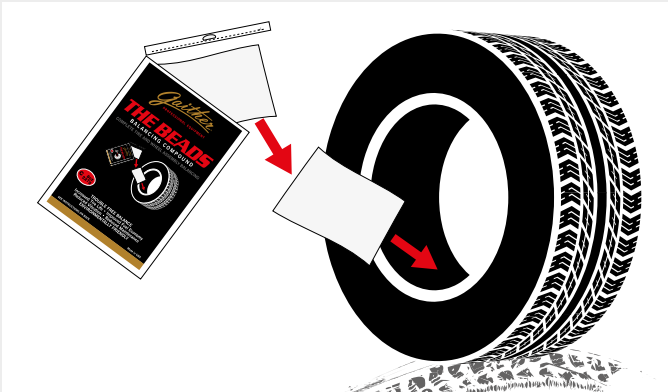
The ultimate tire and wheel assembly balancing solution

TB-403	Gaither Beads 85g Balancing Compound Throw-In Bag
TB-404	Gaither Beads 113g Balancing Compound Throw-In Bag
TB-405	Gaither Beads 142g Balancing Compound Throw-In Bag
TB-406	Gaither Beads 170g Balancing Compound Throw-In Bag
TB-408	Gaither Beads 227g Balancing Compound Throw-In Bag
TB-4010	Gaither Beads 282g Balancing Compound Throw-In Bag
TB-4012	Gaither Beads 340g Balancing Compound Throw-In Bag
TB-4014	Gaither Beads 397g Balancing Compound Throw-In Bag
TB-4016	Gaither Beads 454g Balancing Compound Throw-In Bag

HOW DO THE BEADS WORK?

Fig. 1: As the tire/wheel assembly begins to rotate, The Gaither Beads is distributed around the inner circumference of the tire. Cushioning effect: A = vertical and B = lateral speed up by forming of the footprint.

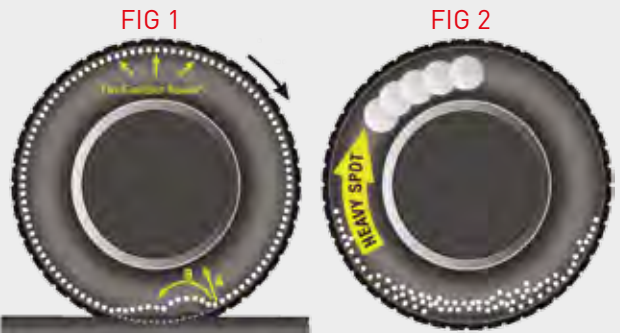
Fig. 2: As the centrifugal force increases, the heavy spot of the tire/wheel assembly pulls up and down on the vehicle suspension causing The Gaither Beads to adjust/move in the opposite direction thus resulting in a balanced tire/wheel assembly.



HOW ARE THE GAITHER BEADS USED?

There are two methods of installing The Gaither Beads inside the tire. The Gaither Beads comes in an outside plastic package:

1. Tear open and find inside a thin mil plastic bag of The Gaither Beads. Toss the inner bag into the tire; mount and inflate. Upon driving, The Gaither Beads inner bag will open releasing the product inside the tire.
2. If the tire has already been mounted, The Gaither Beads can be installed through the valve stem using an applicator pump.



ABOUT US

Gaither Tool Co. founded in 1988, is an international organization committed to serving the tire and trucking industry. It invents and manufactures convenient tools and systems needed to service and maintain tires and wheel assemblies.

Gaither Tool Co. continually invests in research and development to bring to its customers the most effective tools in the business. It strives to improve efficiency and reduce costs for customers all over the world working in truck maintenance shops as well as on-the-road tire service providers. Bandag, Euromaster/Michelin, Bridgestone's First Stop, The United States Armed Forces... just to name a few.

Gaither supplies products to customers in over 100 countries, selling through exclusive and nonexclusive distributors. Gaither Tool Co. is headquartered in Jacksonville, Illinois, U.S.A. In 1997 it opened a branch office located in Roosendaal, Holland to better serve the European market. In 1999 that office was incorporated in Holland and Gaither Europe BV was started. Gaither's manufacturing plant and warehousing for International distribution is located in Taichung, Taiwan.

With a strategically placed location in both The United States and The Netherlands, we are able to serve the global industry



CONTACT US

GAITHERTOOL.COM

GAITHER TOOL CO.

2255 West Morton Ave.
Jacksonville, Illinois 62650 USA

t 217.245.0545
800.452.5010
f 217.245.0940
e sales@gaithertool.com

GAITHER EUROPE BV THE NETHERLANDS

Rechtzaad 6
4703 RC Roosendaal
Holland

t +31 (0) 165 554475
f +31 (0) 165 391819
e evd@gaithereurope.com



CHANGING THE WAY THE WORLD SERVICES TIRE